

Product Specifications

Customer	
Model	NTSP173-3 V600



Records of Revision			
Vision	Modifying	Old Description	New Description
v2512.1	Preliminary specifications		

Features

- ★ 17.3 inch Industrial Grade Panel, 1920x1080 (FHD) Resolution
- ★ 1200nits High Brightness
- ★ Wide Viewing Angle Technology (176°/176°)
- ★ Operating Temperature Range -30~80°C
- ★ Narrow Bezel, True Flat Projected Capacitive Touch Screen
- ★ 7H Hardness Tempered Cover Glass
- ★ 10 points Multi-touch, Supports NEXTECH Dedicated Stylus
- ★ Metal Cabinet with Diverse Combine Options
- ★ Made in Taiwan, 3 Years Warranty, Designed for Harsh Environments
- ★ Optional Software Remote Control by RS232 or DDC/CI
- ★ Optional Auto Dimming Function (with Light Sensor)
- ★ Optional Anti-Glare&UV/Antibacterial/Privacy Filter Surface Treatment



Desktop Stand



Wall Mounting



Open-frame Brackets



Panel Mount

Display Specifications

Model Name	NTSP173H X 3S2- XXXXX F-600*	Display Mode	Normally Black
Screen Diagonal	17.3 inch	Response Time	35 msec.
Display Area	381.9x214.8 mm	Backlight Unit	LED (white LED)
Resolution	1920x1080 (FHD)	Viewing Angle (L/R, U/D)	176°/176° (CR=10)
Contrast Ratio	1700:1	Backlight Lifetime	>50,000 小時
Display Ratio	16:9	Operating Temp.	-30~80°C
Support Colors	16.7M Colors	Storage Temp.	-40~85°C
Pixel Pitch	0.1995x0.1995 mm	Brightness	1200nits

* ~~X~~ = A~Z, 0~9 (Depends on options)

Accessories

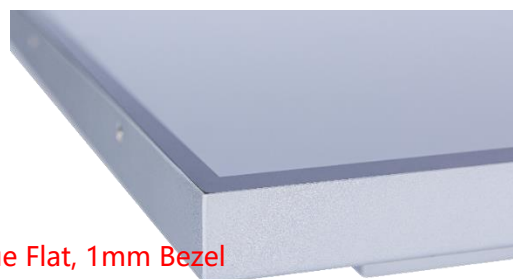
Item	Description	Quantity
HDMI Cable	Male to Male, 1.8 Meter	1
AC-DC Adapter	12V with CE/FCC/CCC/UL/RoHS/PSE/JET Certification	1
Power Cord	*Country Specific	1
USB Cable	A type, Male to Male, 1.8 Meter *(only for touch monitor)	1

Touch Options

Touch Screen		
	Description	Model Name
Standard	Projected Capacitive Touch	NTSP173HP3S2-XXXXXF-600
Option	Non-Touch	NTSP173H03XX-XXXX0F-600

Projected Capacitive Touch

Allowed Touch Points	10 points	Thickness of Cover Lens	2.75±0.2mm
Transparency	≥87%	Hardness of Cover Lens	7H
Accuracy	99.00%	IK Ratings	IK07



* True Flat, 1mm Bezel

Passive Stylus Pen (Option)	
Technology	Passive High Sensitive Knitted Wire Mesh Fiber Tip
Size of tip	6mm
Magnetic Attachment	Yes



Magnetic Attachment

General Options

Surface Treatment		
	Description	Model Name
Standard	(none)	NTSP173HX3S2-<u>00</u>XXXF-600
Option 1	Anti-Glare&UV Coating	NTSP173HX3S2- <u>GG</u> XXXF-600
Option 2	Antibacterial (AB Film)	NTSP173HX3S2- <u>AB</u> XXXF-600
Option 3	Anti-Spy (AS Film)	NTSP173HX3S2- <u>SF</u> XXXF-600

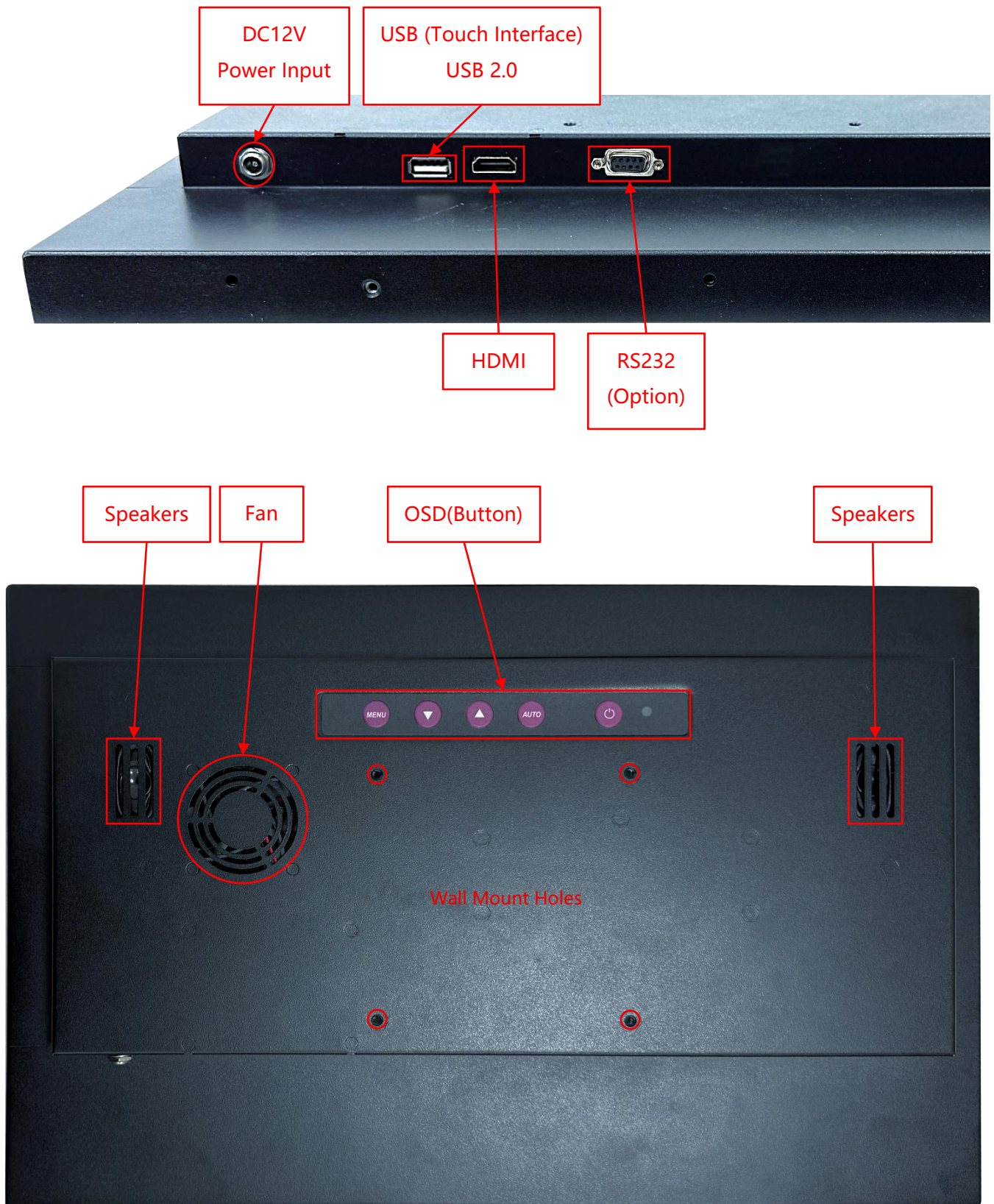
Color of Cabinet		
	Description	Model Name
Standard	Black	NTSP173HX3S2-<u>XX</u>BXXF-600
Option 1	White	NTSP173HX3S2- <u>XX</u> W XXF-600
Option 2	Silver	NTSP173HX3S2- <u>XX</u> S XXF-600
Options	Other Colors	NTSP173HX3S2- <u>XX</u> X XXF-600

* X = A~Z, 0~9 (Depends on Color)

Material of Cabinet		
	Description	Model Name
Standard	SECC	NTSP173HX3S2-<u>XXX</u>SXF-600
Option 1	Stainless Steel	NTSP173HX3S2- <u>XXX</u> L XF-600
Option 2	Aluminum	NTSP173HX3S2- <u>XXX</u> A XF-600

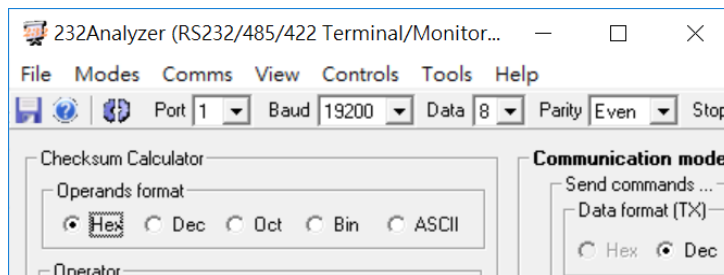
Touch Interface		
	Description	Model Name
Standard	USB	NTSP173HP3S2-<u>XXXX</u>UF-600
Option 1	RS232	NTSP173HP3S2- <u>XXXX</u> R F-600
Option 2	Non-Touch	NTSP173H03S2- <u>XXXX</u> 0 F-600

Input /Output System



Other Options

OSD Control		
	Item	Description
Standard	Button	Rear Physical Button
Option 1	Software Remote Control	Software Remote Control by RS232/Serial Port
Option 2	Auto Dimming (Fixed-mounted)	Auto Brightness Adjusting by Light Sensor
Option 2	Auto Dimming (Magnetically-attached)	Auto Brightness Adjusting by Light Sensor



* Software Remote Control

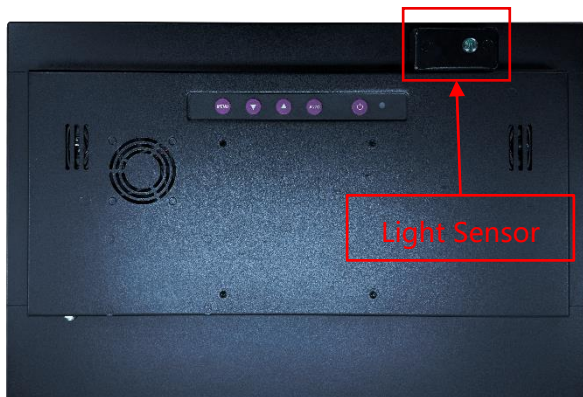
Auto Dimming (Fixed-mounted)



Light Sensor



Auto Dimming (Magnetically-attached)

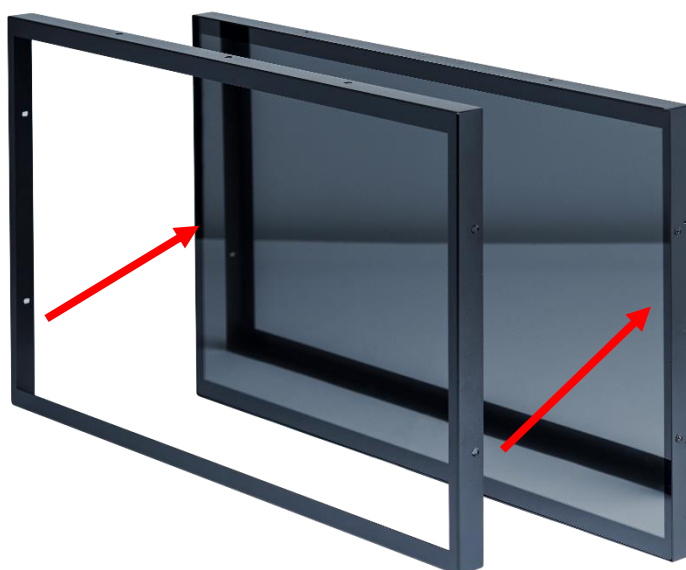


Light Sensor



* Magnetically attachable (any position on enclosure)

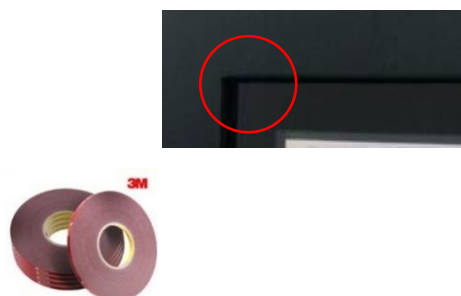
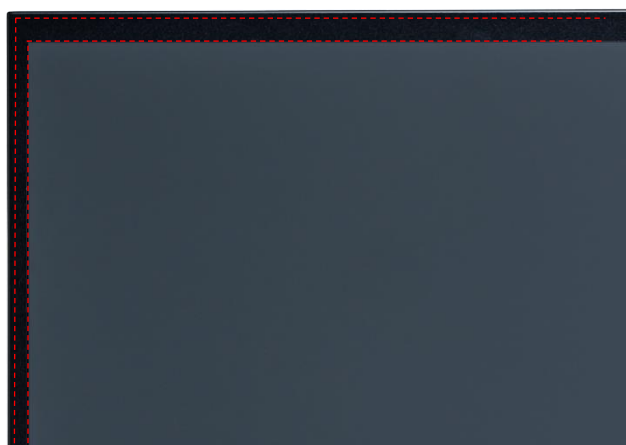
Front Cover (Option)



The standard **NTSP173** is true flat surface, with only 1mm metal bezel.
To protect the corners of the touch screen, the **Front Cover** can be added.



The watertight gasket can be added between the **Front Cover** and **NTSP173**.
It complies **IP65** on front.



Desktop Stand (Option)

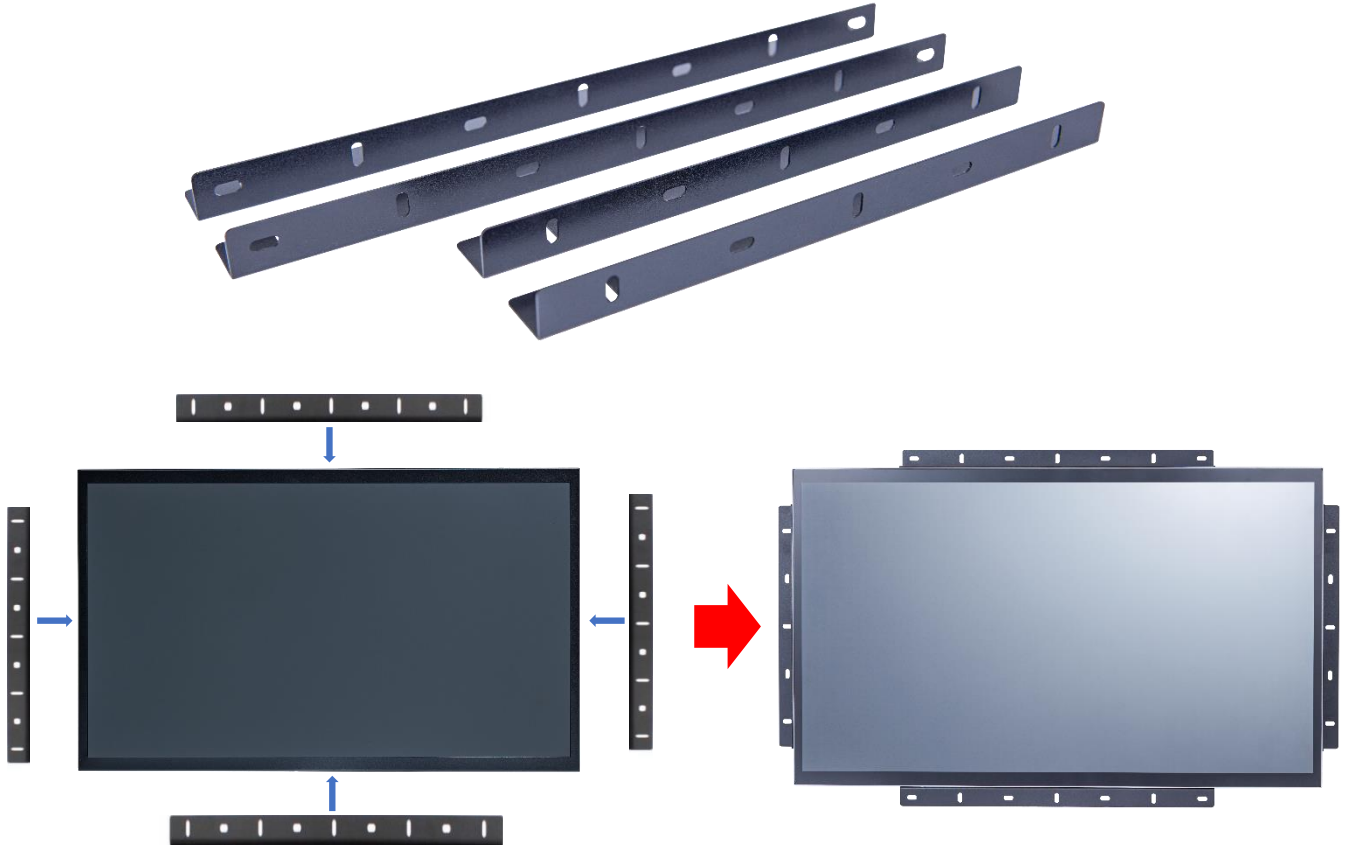
Item	B Stand	Part No.	DST-0B002/DST-1B002
Mounting Pattern	100x100 / 75x75 mm	Dimension (WxHxD)	203x275x227 mm
Material	Steel/Plastic/Aluminum	Net Weight	1.8 KG
Tilt (Hinge)	-2° ~ +180°	Support Max. Weight	15 KG



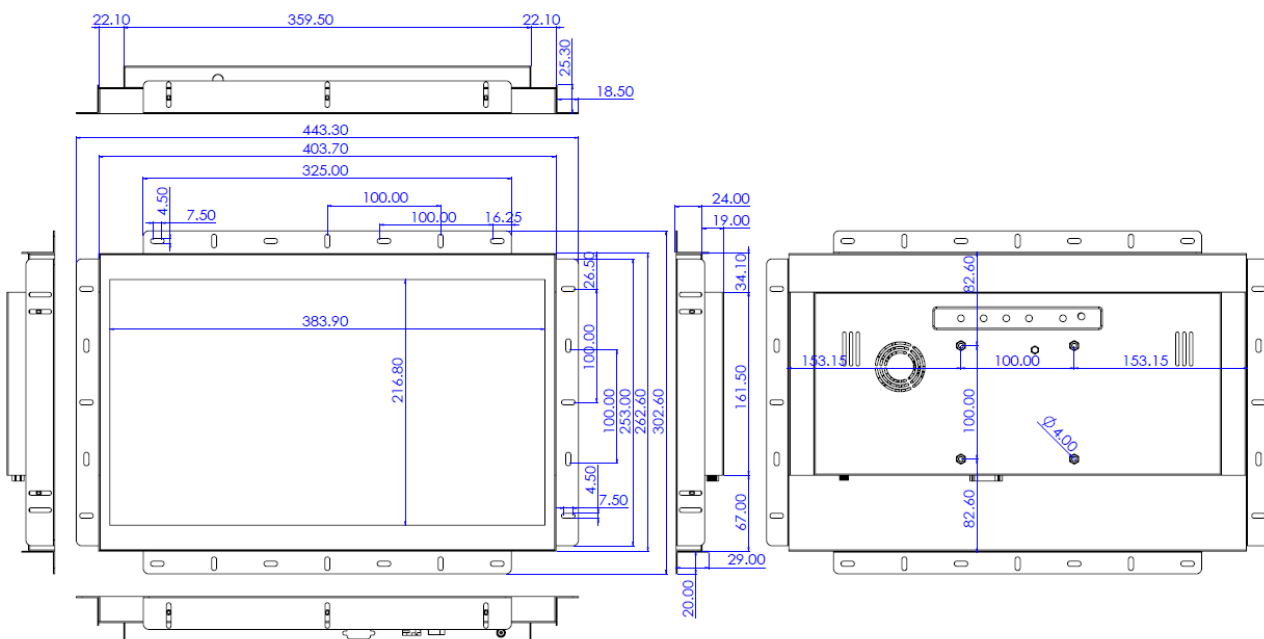
Item	Z Stand	Part No.	DST-0BZ01/DST-1BZ01
Mounting Pattern	100x100 / 75x75 mm	Dimension (WxHxD)	190x240x41.6
Material	SECC	Net Weight	2.6 KG
Tilt (Hinge)	±360°	Support Max. Weight	15 KG



Open-frame Brackets (Option)



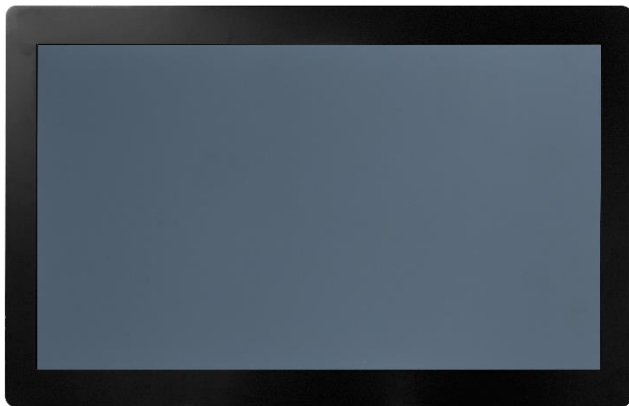
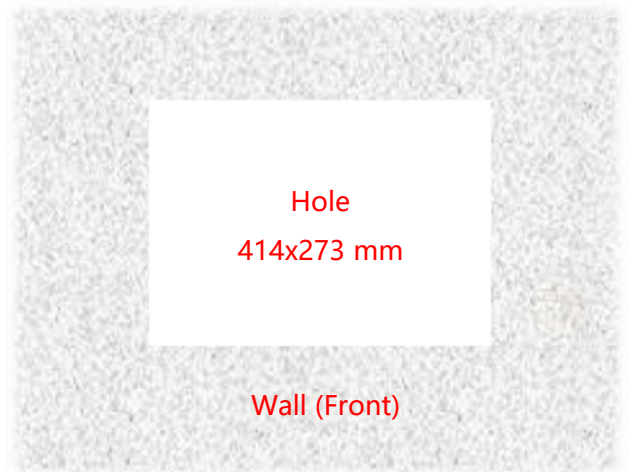
Dimension for Installing with Open-frame Brackets



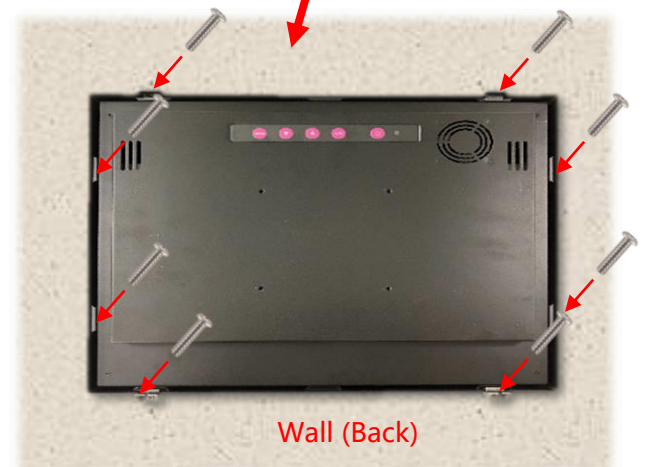




Step 1: Assemble the front module with the screen body. (This step is pre-assembled at the factory.)

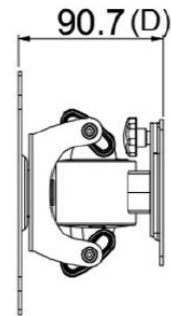
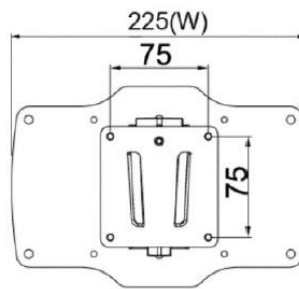
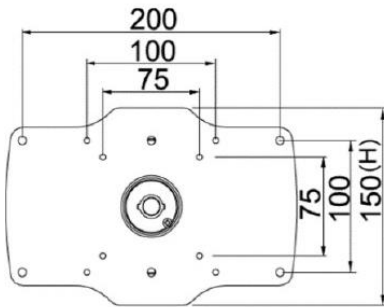
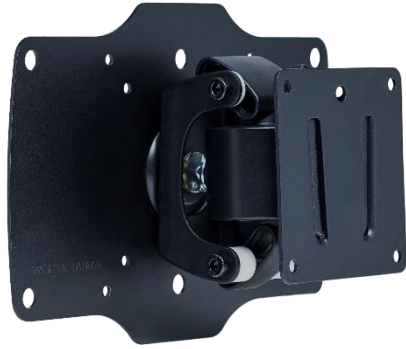


Step 2: Insert the screen from the front into the pre-cut opening.



Step 3: Attach the clips from the back and secure with screws. (Up to 10 clips can be installed as needed or per positional limitations.)

Wall Mount Bracket (Option)



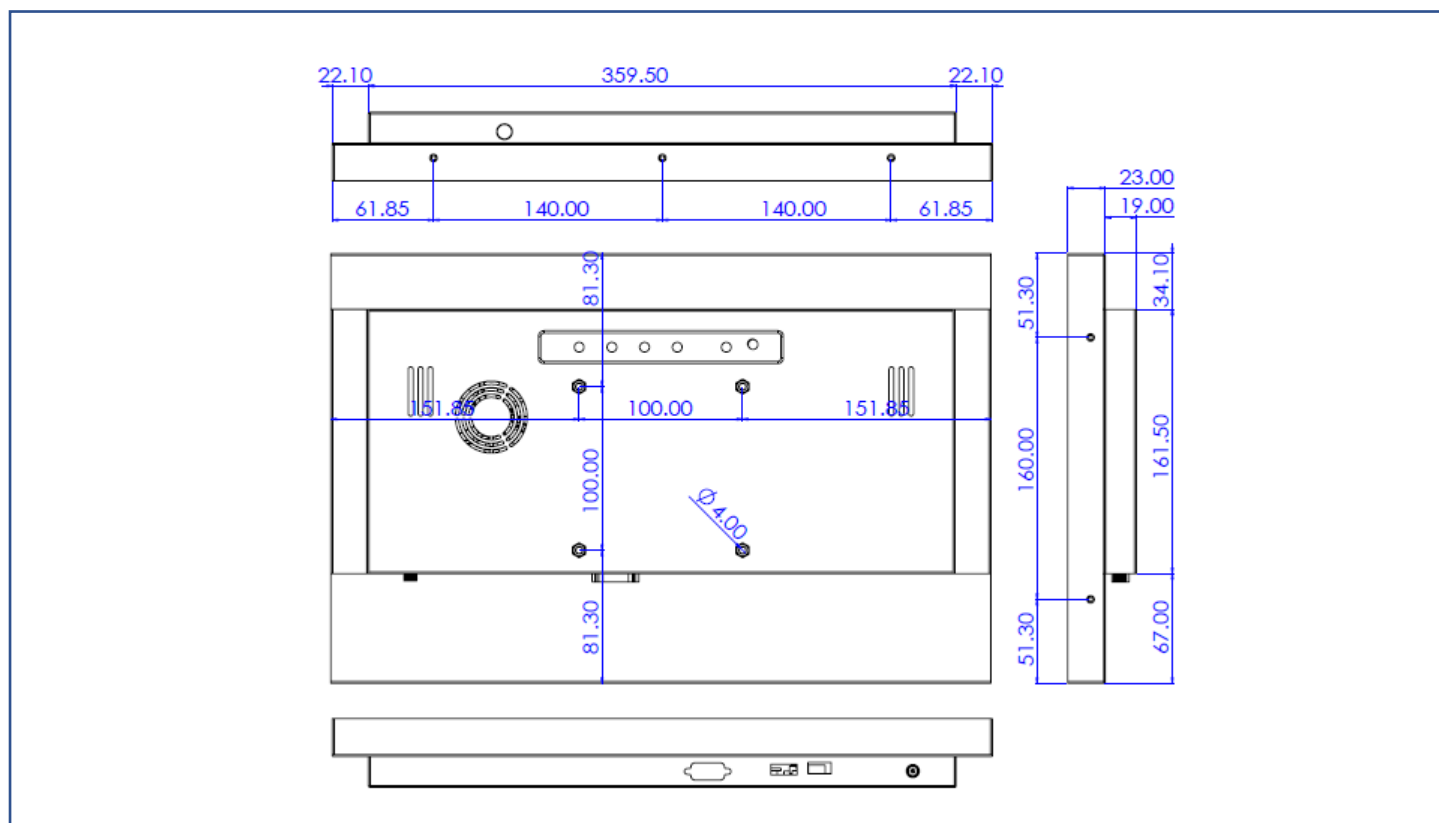
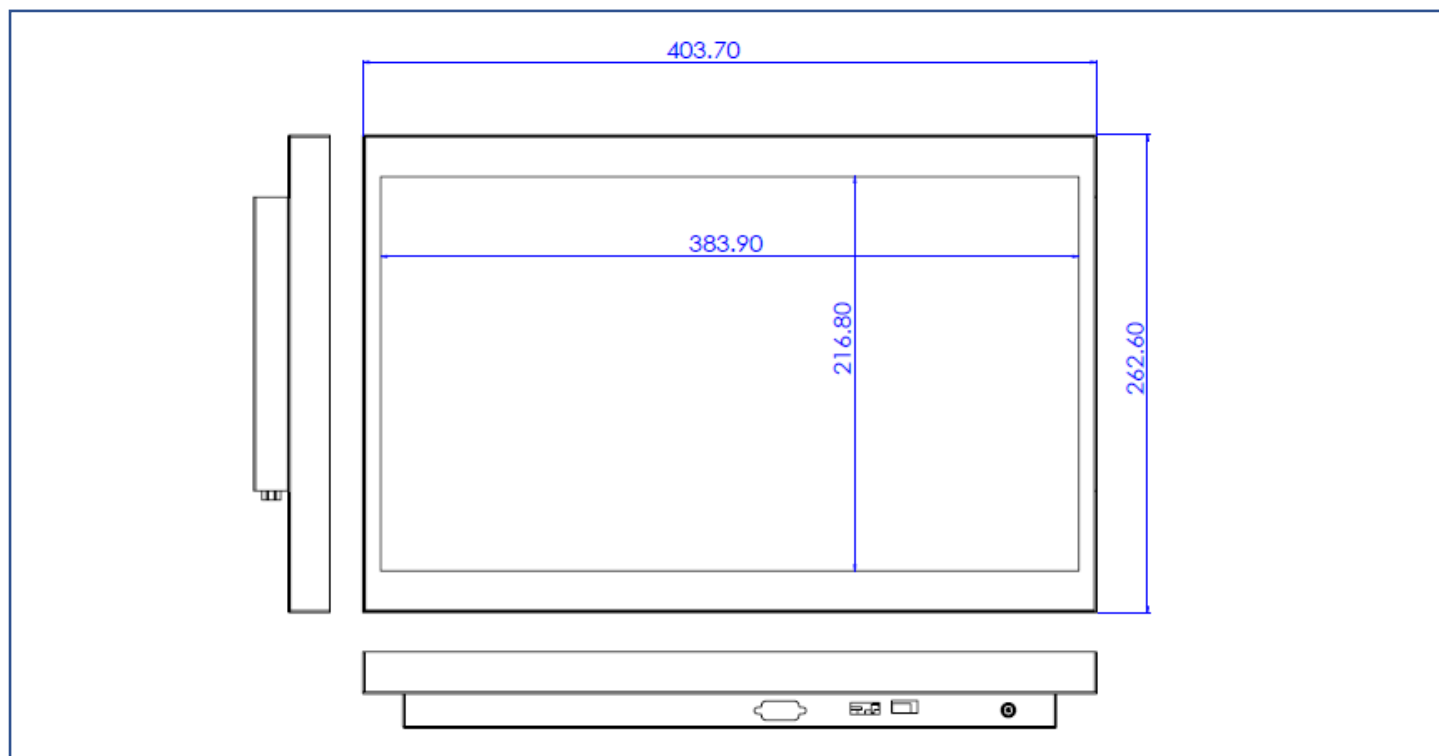
Packing Information



Unit Carton Size	585x163x450 mm
Unit N. Weight	≤3.0 KG
Unit G. Weight	≤5.0 KG
Units per Pallet	36 units
Pallet Size	120x100x147 CM

Physical Specifications

Dimension (Max)	403.7x262.6x42(±2)mm	Net Weight	≤3.0 KG
VESA Mounting	100x100 mm	Gross Weight	≤5.0 KG



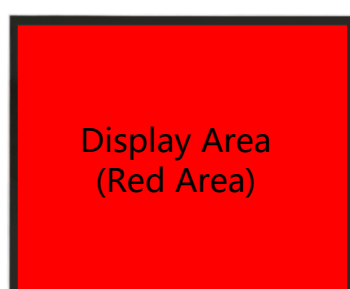
Cosmetic Inspection Standard

Display Area Allowance			
Defect description	Defective Specifications	Allowance	Remarks
Dot Defect (including dark dot, particles, bubbles, pits, dust, foreign matter)	$D \leq 0.2\text{mm}$	Ignored	D=Diameter
	$0.2 < D \leq 0.7\text{mm}$	$N \leq 5$	N=Quantity
	$0.7 < D \leq 1\text{mm}$	$N \leq 3$	
	$D > 1\text{mm}$	$N \leq 0$	
Linear Defect (including scratches, fluff, particles)	$W \leq 0.15\text{mm}$	Ignored	W=Width
	$0.15 < W \leq 0.5\text{mm}, L \leq 15\text{mm}$	$N \leq 2$	L=Length
	$W > 0.5\text{mm}$ or $L > 15\text{mm}$	NG	

* Visual inspection distance: 60cm, 90 degree (same for front/side/back)

Front Appearance Allowance (Including Coating)			
Defect description	Defective Specifications	Allowance	Remarks
Dot Defect (including particles, bubbles, pits...etc.)	$D \leq 0.7\text{mm}$	Ignored	D=Diameter
	$0.7 < D \leq 1.5\text{mm}$	$N \leq 3$	N=Quantity
	$D > 1.5\text{mm}$	$N \leq 0$	
Linear Defect (including scratches, fluff, particles)	$W \leq 0.2\text{mm}, L \leq 15\text{mm}$	Ignored	W=Width, L=Length
	$0.2 < W \leq 0.7\text{mm}, L \leq 15\text{mm}$	$N \leq 1$	
	$W > 0.7\text{mm}$ or $L > 15\text{mm}$	NG	

Side / Back Appearance Allowance (Including Coating)			
Defect description	Defective Specifications	Allowance	Remarks
Dot Defect (including particles, bubbles, pits...etc.)	$D \leq 1.5\text{mm}$	Ignored	D=Diameter
	$1.5 < D \leq 3\text{mm}$	$N \leq 8$	N=Quantity
	$D > 3\text{mm}$	$N \leq 2$	
Linear Defect (including scratches, fluff, particles)	$W \leq 0.8\text{mm}, L \leq 15\text{mm}$	Ignored	W=Width, L=Length
	$0.8 < W \leq 1.5\text{mm}, L \leq 15\text{mm}$	$N \leq 5$	
	$W > 1.5\text{mm}$ or $L > 15\text{mm}$	NG	



Display Area
(Red Area)



Front Appearance (Red Area)



Back Appearance