

Product Specifications

Customer	
Model	NTMD238 V600



Revision History			
Version	Revision Item	Previous Description	Updated Description
v2604.1	Initial release	--	--

Key Features

- ★ Certified to CE/FCC/UL 60601 medical standards
- ★ 23.8" wide LCD panel 1920x1080 (FHD)
- ★ Wide viewing angle 178°/178°
- ★ Narrow-bezel true-flat PCAP touch screen
- ★ Anti-glare UV-resistant tempered glass (7H hardness)
- ★ 10-point multi-touch , supports Nextech stylus
- ★ Aluminum housing with multiple mounting options
- ★ Made in Taiwan, 3-year warranty
- ★ Power input options : 12VDC / 9–36VDC / 100–240VAC
- ★ Optional remote control via RS-232 or DDC/CI
- ★ Optional high brightness up to 1500nits for outdoor applications
- ★ Optional Ambient light sensor with automatic brightness adjustment
- ★ Optional Privacy filter or antimicrobial surface treatment



UL 60601



PSE



BSMI



CE 60601

FCC Part18



Display Specifications

Model Name	NTMD238 <u>XXSDX-XXXXXX</u> -600*	Display Mode	Normally Black
Screen Diagonal	23.8 inch	Response Time	16 msec.
Active Area	527.04x296.46 mm	Backlight	White LED
Resolution	1920x1080 (FHD)	Viewing Angle (L/R, U/D)	178°/178° (CR≥10)
Contrast Ratio	3000:1	Backlight Lifetime	>30,000 Hours
Aspect Ratio	16:9	Operating Temp.	0~50°C
Colors	16.7M	Storage Temp.	-20~60°C
Pixel Pitch	274.5x274.5 um		

* X = A-Z, 0-9 (Varies by options)

Brightness Options

Configuration	Brightness	Application	Ordering Information
Standard	250nits	General (Indoor)	NTMD238 <u>NXSDX-XXXXXX</u> -600
Optional	400nits	General (Indoor)	NTMD238 <u>NX2DX-XXXXXX</u> -600 *
Optional	1000nits	Outdoor / Semi-outdoor	NTMD238 <u>AXSDX-XXXXX</u> F-600
Optional	1500nits	Outdoor	NTMD238 <u>FX3DX-XXXXX</u> F-600 *

* Refer to datasheets: NTMD238-2, NTMD238-3

Touch Options

Configuration	Specification	Ordering Information
Standard	Projected Capacitive Touch	NTMD238 <u>XPSDX-XXXXXX</u> -600
Optional	No touch	NTMD238 <u>X0SDX-XXXX0X</u> -600

PCAP Touch Specifications

Touch Points	10 points	Cover Lens Thickness	2.9±0.2mm
Transparency	≥87%	Cover Lens Hardness	7H
Accuracy	99.00%	IK Ratings	IK07

Other Configuration Options

Power Input		
Configuration	Specification	Ordering Information
Standard	12VDC locking jack (Φ2.1mm)	NTMD238XXSD2-XXXXXX-600
Optional	9-36VDC, Phoenix terminal block	NTMD238XXSD P -XXXXXX-600
Optional	100-240VAC, C14 inlet	NTMD238XXSD A -XXXXXX-600



Lockable DC Power Jack



Phoenix Terminal Block



C14 AC Inlet

Surface Treatment		
Configuration	Specification	Ordering Information
Standard	Anti-Glare, Anti-UV Coating	NTMD238XXSDX-GGXXXX-600
Optional	Antibacterial (AB Film)	NTMD238XXSDX- AB XXXX-600
Optional	Privacy filter (AS Film)	NTMD238XXSDX- SF XXXX-600

Housing Color		
Configuration	Specification	Ordering Information
Standard	White	NTMD238XXSDX-XXWXXX-600
Optional	Black	NTMD238XXSDX-XX B XXX-600
Optional	Silver	NTMD238XXSDX-XX S XXX-600
Optional	Custom Color	NTMD238XXSDX-XX X XXX-600

* X = A~Z, 0~9 (Varies by Color)

Nextech MD Series 23.8" Medical Touch Display

NTMD238 V600

Housing Material		
Configuration	Specification	Ordering Information
Standard	Aluminum	NTMD238XXSDX-XXXAXX-600
Optional	Stainless Steel	NTMD238XXSDX-XXXLXX-600
Optional	SECC	NTMD238XXSDX-XXXSXX-600

Touch Interface		
Configuration	Specification	Ordering Information
Standard	USB	NTMD238XPSDX-XXXXUX-600
Optional	No touch	NTMD238X0SDX-XXXX0X-600

Cooling System		
Configuration	Specification	Ordering Information
Standard	Fanless	NTMD238XXSDX-XXXXX0-600
Optional	7-blade, 4000 RPM, 28.3dB	NTMD238XXSDX-XXXXXF-600

Supported OS

Windows	Win7, Win8, Win10, Win11 ↑
Linux	Kernel 2.6.24 ↑
Android	3.0 ↑
Mac	10.5.x ↑ (Intel CPU)

Included Cables and Power Accessories

Item	Specification	Quantity
HDMI Cable	Male-to-male, 1.8 meter	1
AC-DC Adapter	12V medical adapter, CE/FCC/CCC/UL/RoHS/PSE/JET certified	1
Power Cord	* (varies by region)	1
USB Cable	Type A, Male-to-male, 1.8 Meter *(touch models only)	1

Optional Features & Accessories

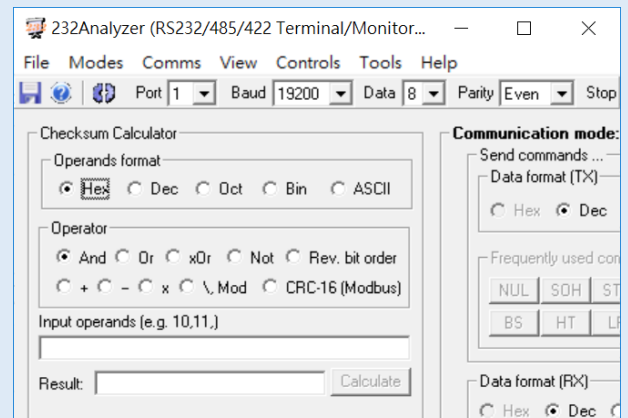
Option	Item	Description
Optional	Remote software control	Remote software control via RS232 interface
Optional	Ambient light sensor	Automatic brightness control
Optional	Stylus pen	

Light sensor (Optional)



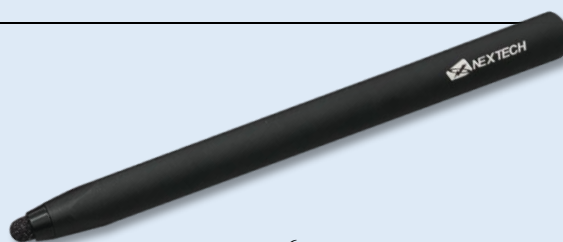
*Mountable on all sides

Remote Software (Optional)



Nextech Stylus (Optional)

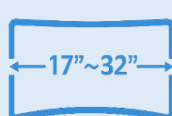
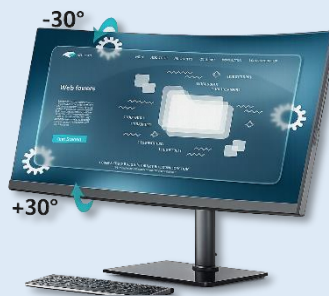
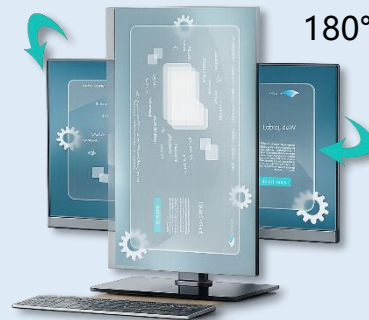
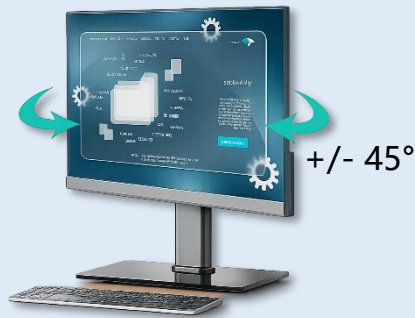
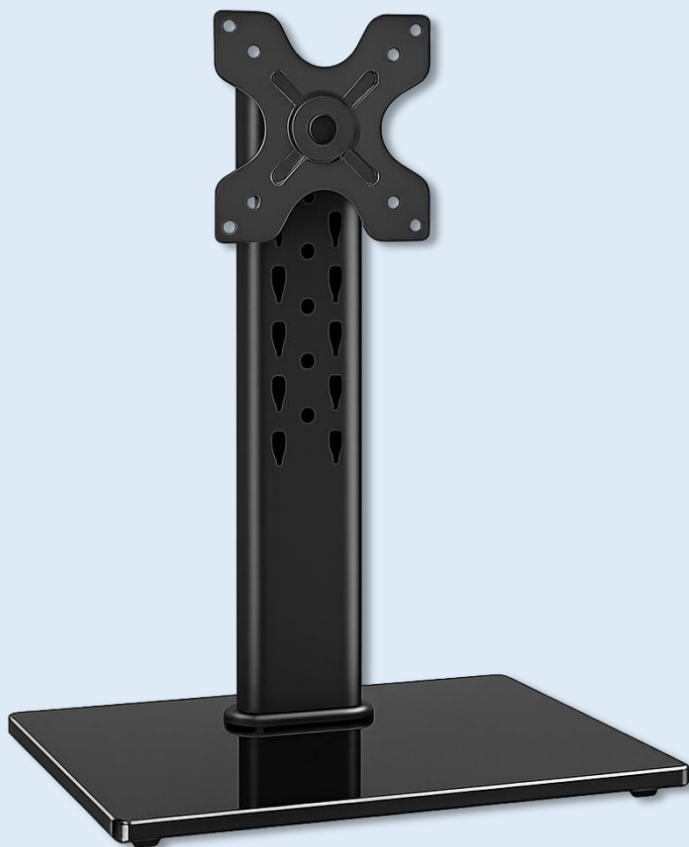
Tip	Passive conductive metal mesh
Tip Diameter	6mm



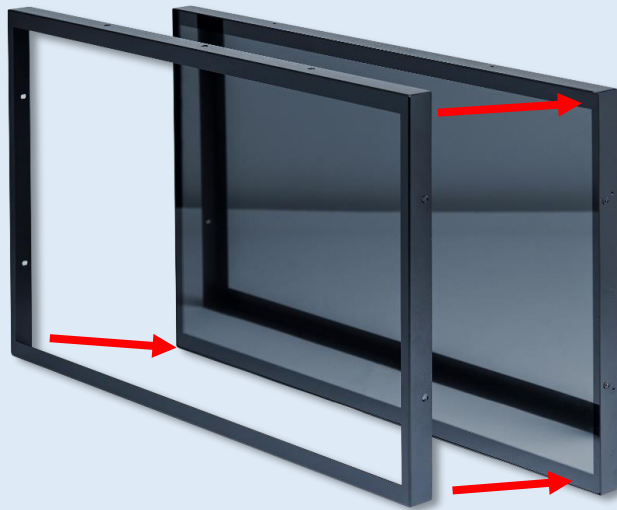
Optional Mounting Accessories

	Accessories	Description
Optional	Desktop stand	For desktop use
Optional	Front protection frame	Protects panel and enables Front IP65 protection
Optional	Panel mount kit	For front mounting into kiosks, cabinets, or equipment panels.
Optional	Open-frame brackets	For rear mounting installation inside kiosks, cabinets, or equipment panels.
Optional	Wall Mount Bracket	For wall mounting

Desktop Stand (Optional)



Front Protection Frame (Optional)

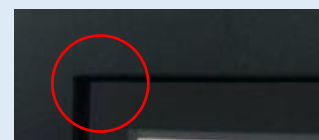
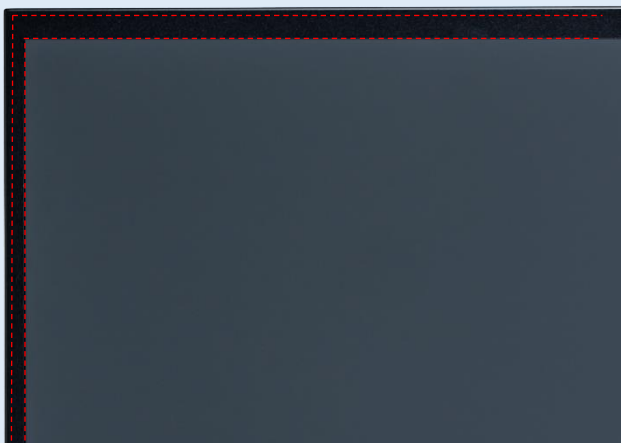


The standard **NTMD238** features a true-flat design with only 1mm metal bezel.

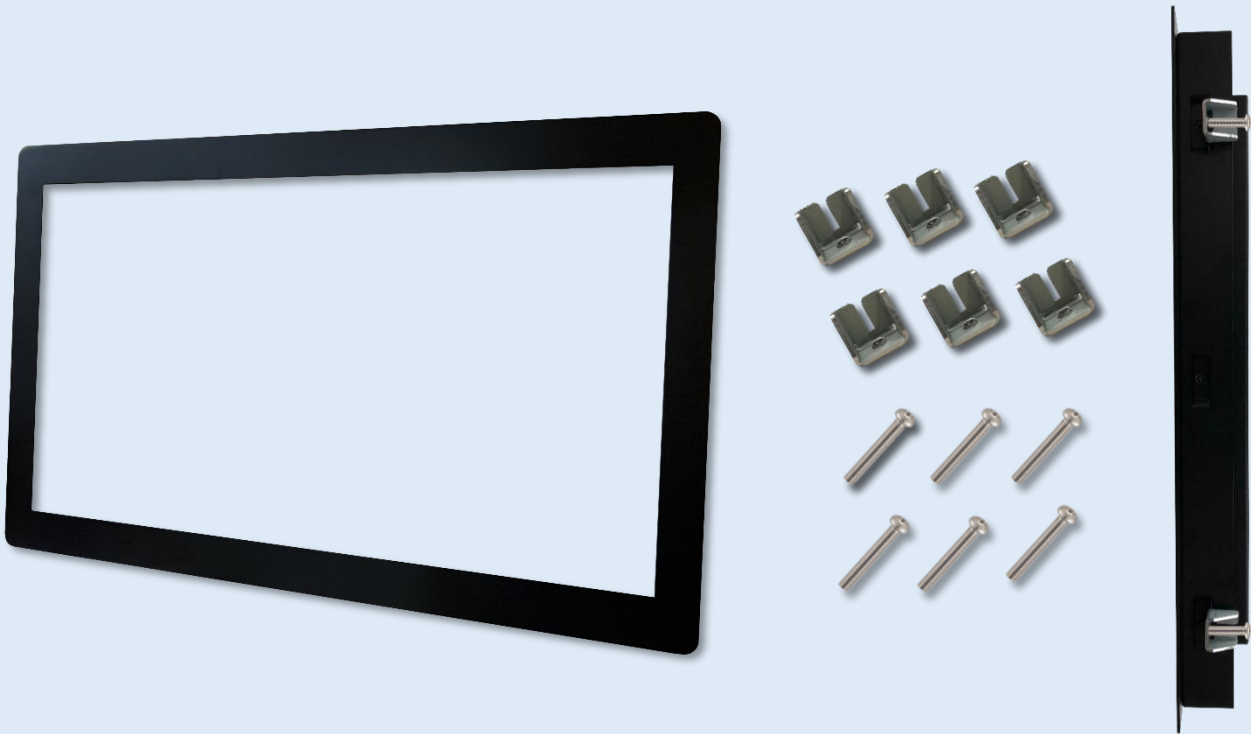
To enhance protection for the corners of the touch screen, the **Front Protection Frame** can be added.



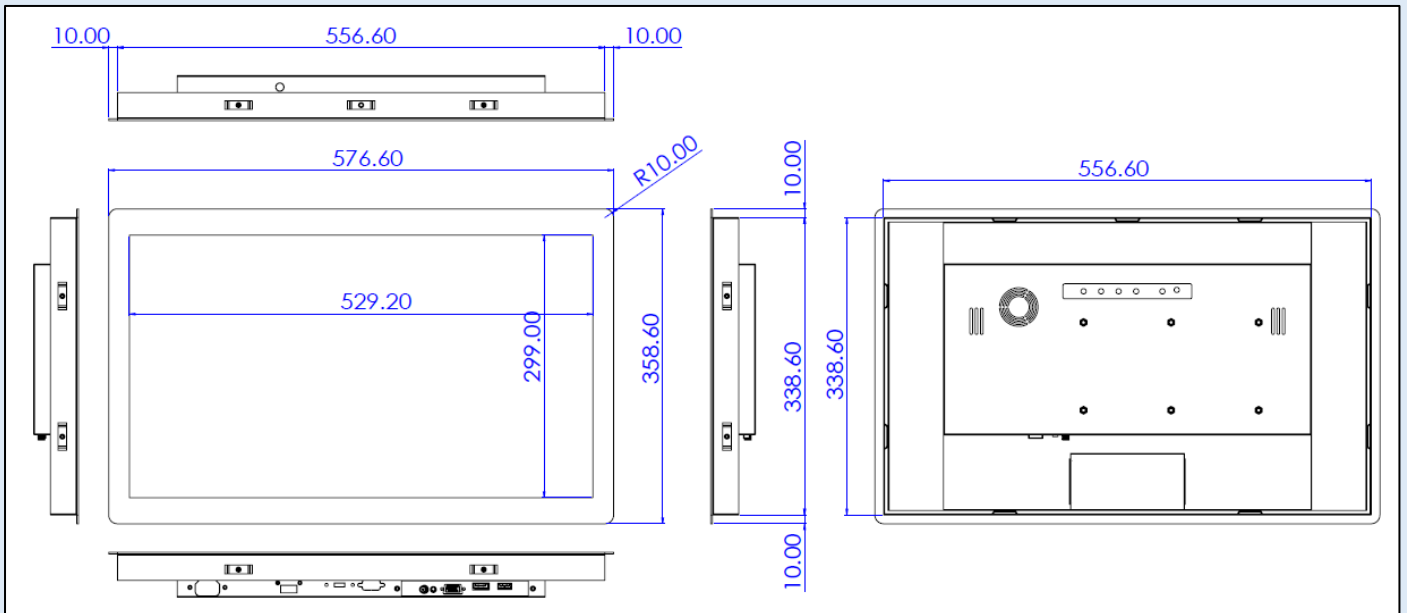
A waterproof gasket can be added between the **Front Protection Frame** and the **NTMD238** to comply with IP65 front protection requirements.



Panel Mount Kits (Option)



Panel Mount Installation Dimensions

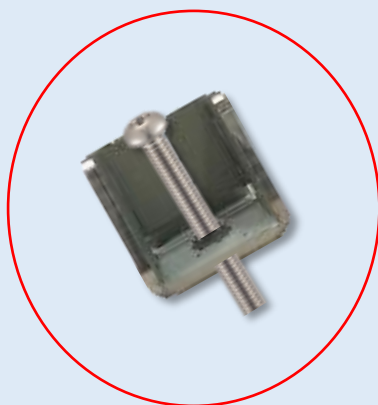




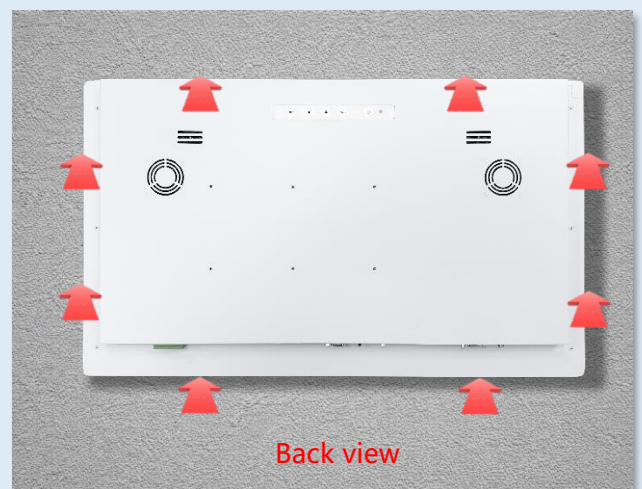
Step 1
Assemble the front module with the display unit.
(This step is pre-assembled at Nextech's factory.)



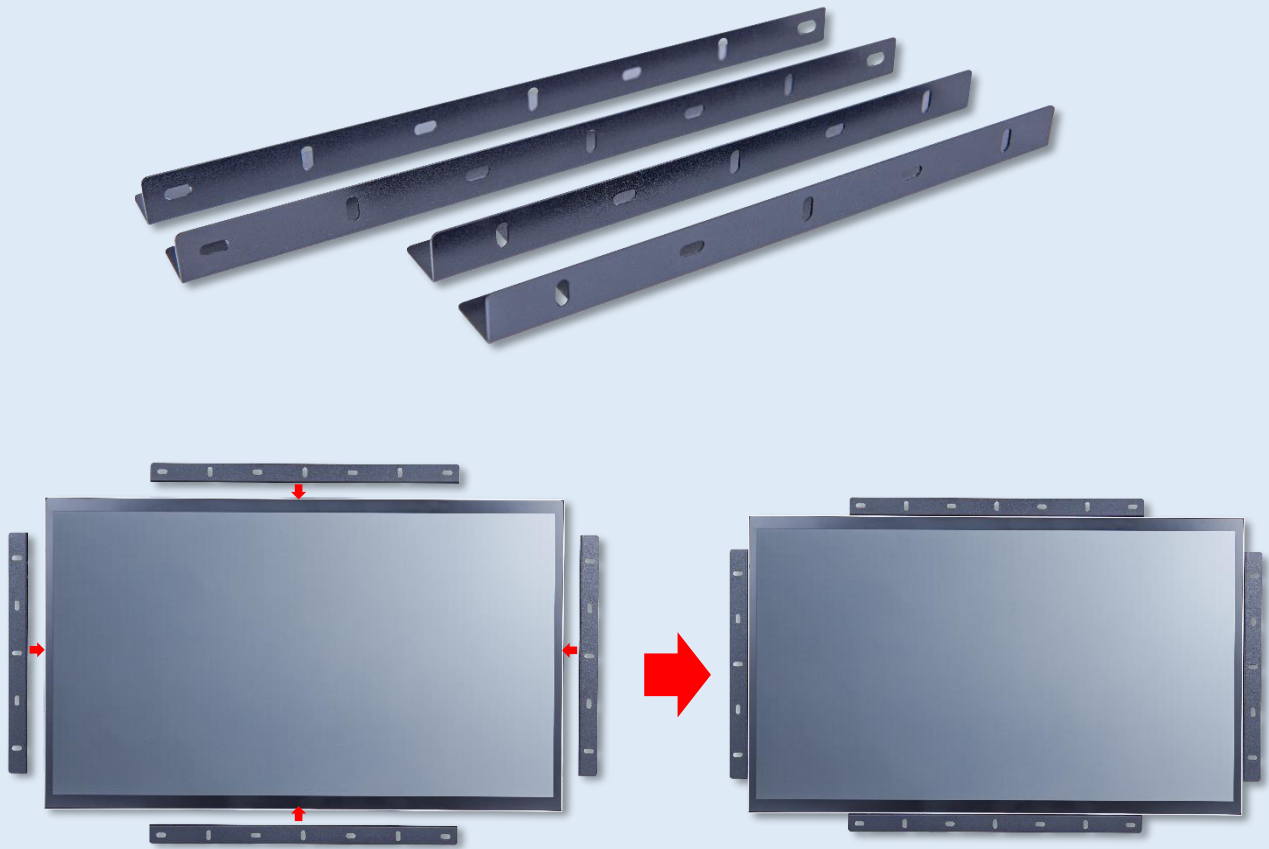
Step 2
Insert the display into the cut-out from the front.



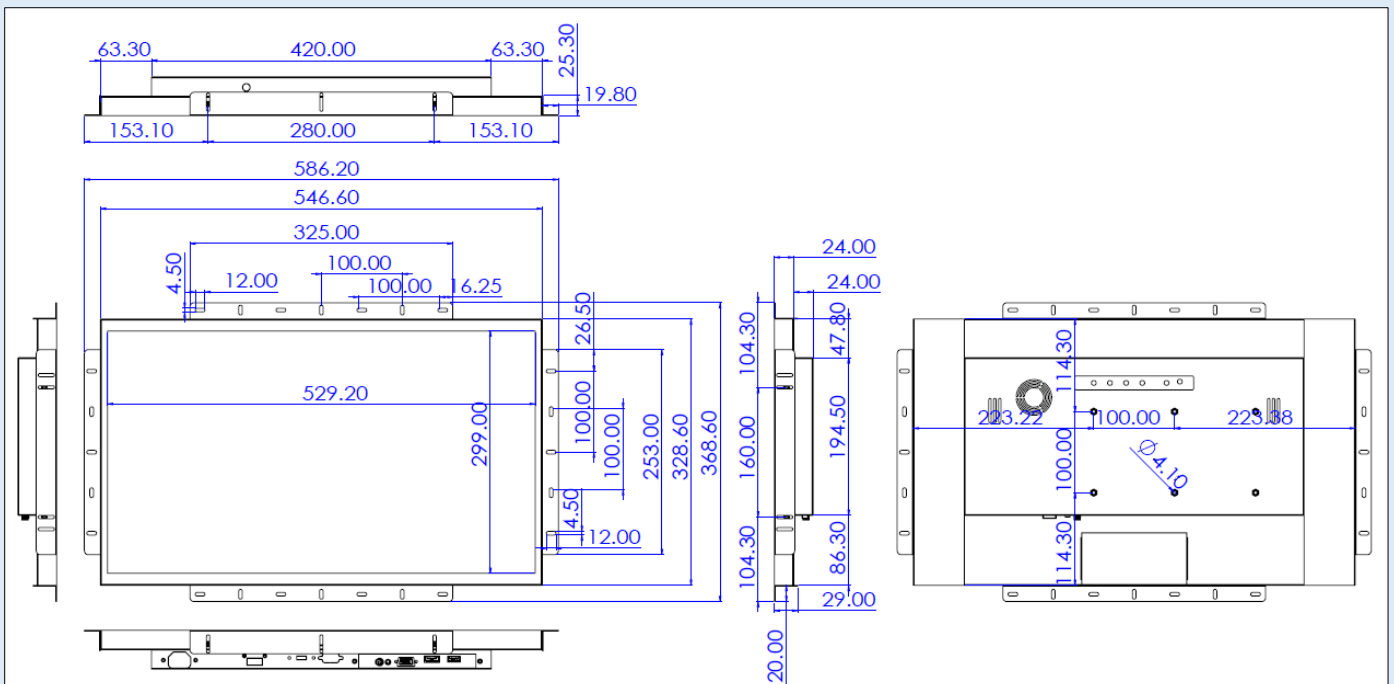
Step 3
Install the mounting clips from the rear side and secure them with screws.



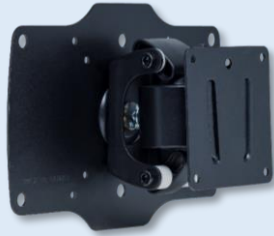
Open-frame Brackets (Optional)



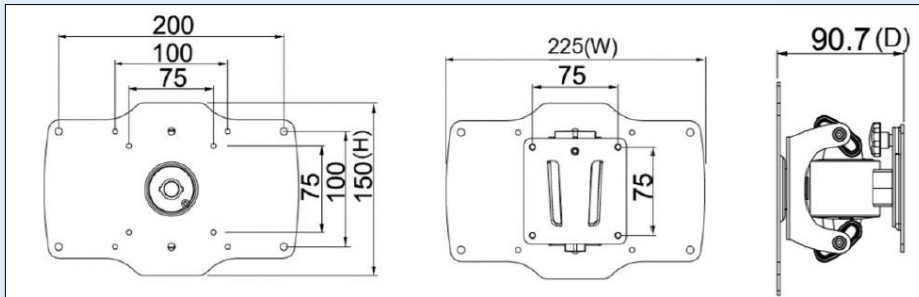
Open-frame Bracket Installation Dimensions



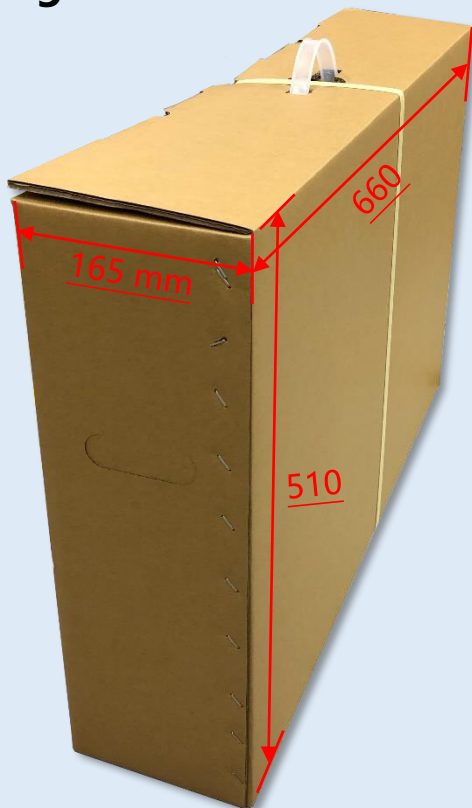
Wall Mount Bracket (Optional)



Wall Mount Bracket Dimensions

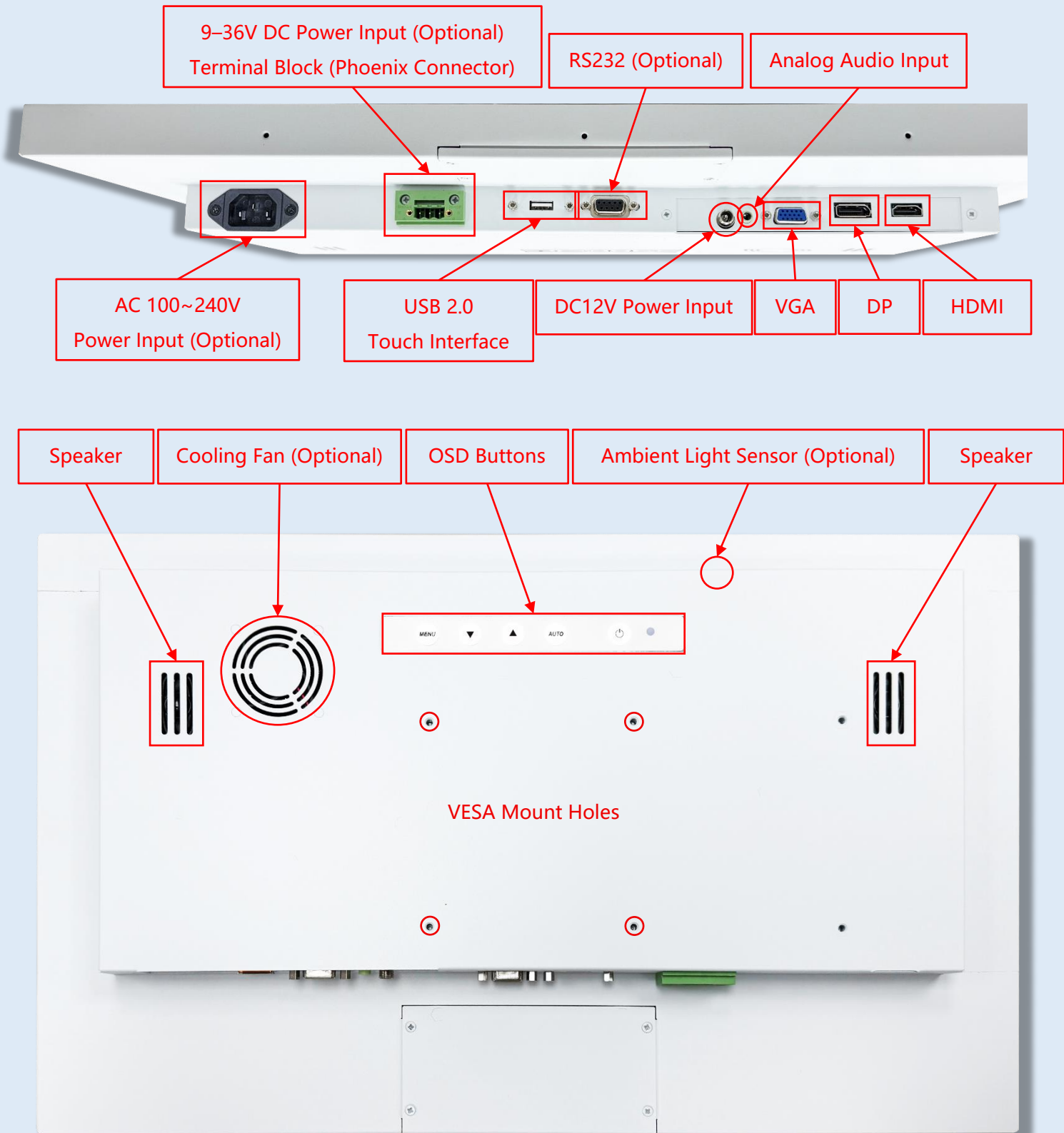


Packaging Information



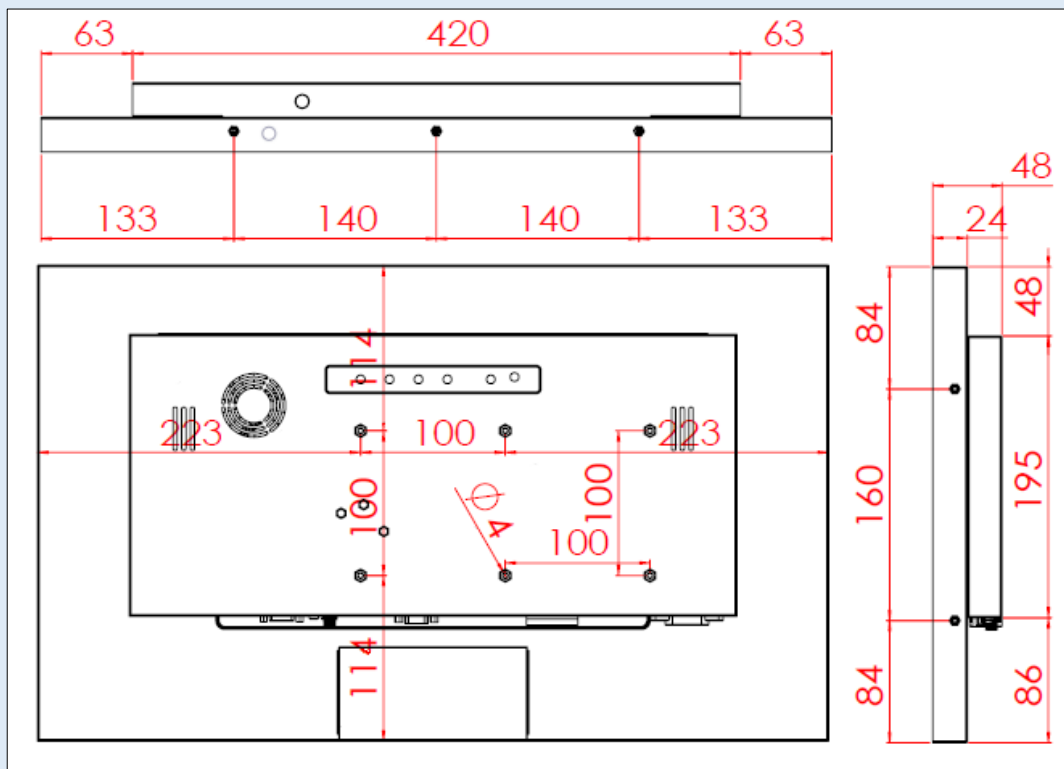
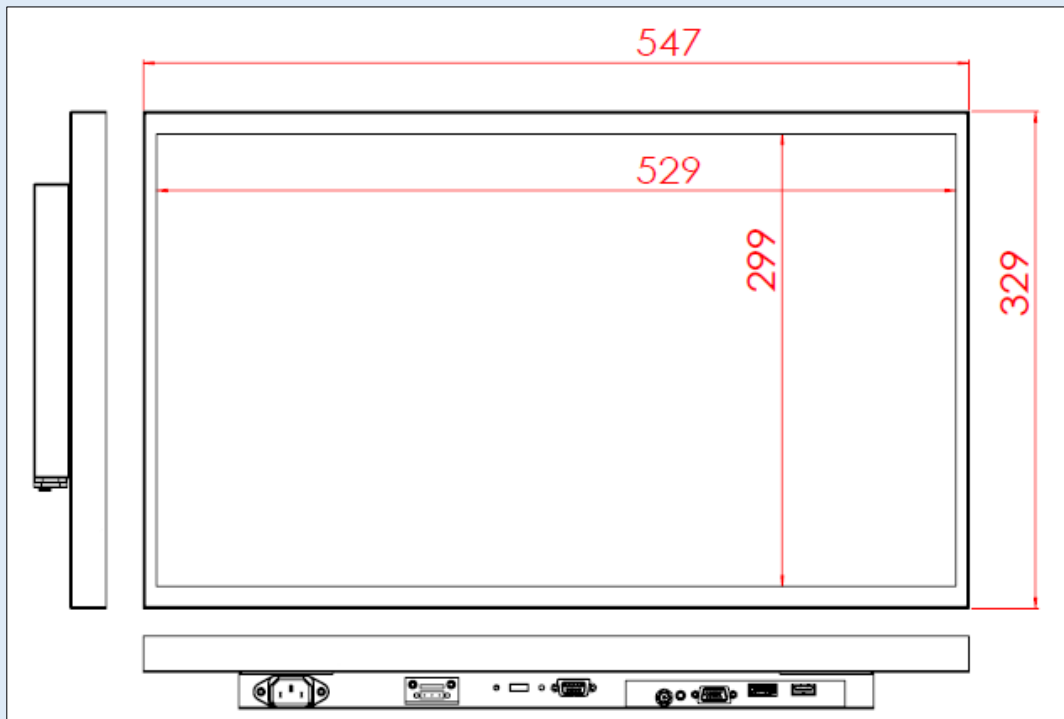
Carton Dimensions	660x165x510 mm
Net Weight	≤ 6.4 kg
Gross Weight	≤ 4.7 kg
Units per Pallet	30 units
Pallet Size	120x100x179 cm

Input /Output System



Mechanical Specifications

Dimensions (Max.)	547x329x48±2mm	Net Weight	≤6.4 kg
VESA Mount	100x100 mm	Gross Weight	≤4.7 kg



Cosmetic Inspection Criteria

Display Area Defect Criteria			
Defect Description	Defect Criteria	Acceptance	Remarks
Dot Defects (dark dot, particles, bubbles, pits, dust, and foreign matter)	$D \leq 0.2\text{mm}$	Ignored	D=Diameter
	$0.2 < D \leq 0.7\text{mm}$	$N \leq 5$	N=Quantity
	$0.7 < D \leq 1\text{mm}$	$N \leq 3$	
	$D > 1\text{mm}$	$N \leq 0$	
Linear Defect (scratches, fluff, particles)	$W \leq 0.15\text{mm}$	Ignored	W=Width
	$0.15 < W \leq 0.5\text{mm}, L \leq 15\text{mm}$	$N \leq 2$	L=Length
	$W > 0.5\text{mm}$ or $L > 15\text{mm}$	NG	

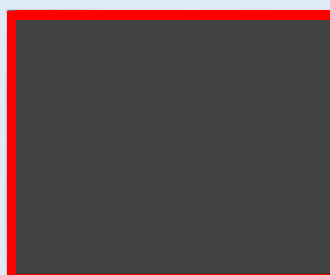
* Visual inspection condition: 60 cm viewing distance, 90° viewing angle (front/side/back).

Front Appearance Defect Criteria (Including Coating)			
Defect Description	Defect Criteria	Acceptance	Remarks
Dot Defects (dark dot, particles, bubbles, pits, dust, and foreign matter)	$D \leq 0.7\text{mm}$	Ignored	D=Diameter
	$0.7 < D \leq 1.5\text{mm}$	$N \leq 3$	N=Quantity
	$D > 1.5\text{mm}$	$N \leq 0$	
Linear Defect (scratches, fluff, particles)	$W \leq 0.2\text{mm}, L \leq 15\text{mm}$	Ignored	W=Width, L=Length
	$0.2 < W \leq 0.7\text{mm}, L \leq 15\text{mm}$	$N \leq 1$	
	$W > 0.7\text{mm}$ or $L > 15\text{mm}$	NG	

Side / Back Appearance Defect Criteria (Including Coating)			
Defect Description	Defect Criteria	Acceptance	Remarks
Dot Defects (dark dot, particles, bubbles, pits, dust, and foreign matter)	$D \leq 1.5\text{mm}$	Ignored	D=Diameter
	$1.5 < D \leq 3\text{mm}$	$N \leq 8$	N=Quantity
	$D > 3\text{mm}$	$N \leq 2$	
Linear Defect (including scratches, fluff, particles)	$W \leq 0.8\text{mm}, L \leq 15\text{mm}$	Ignored	W=Width, L=Length
	$0.8 < W \leq 1.5\text{mm}, L \leq 15\text{mm}$	$N \leq 5$	
	$W > 1.5\text{mm}$ or $L > 15\text{mm}$	NG	



Display Area
(Red Area)



Front Appearance (Red Area)



Back Appearance