

# Product Specifications

<b>Customer</b>	
<b>Model</b>	<b>NTMD215 V600</b>



Revision History			
Version	Revision Item	Previous Description	Updated Description
v2604.1	Initial release	--	--

### Key Features

- ★ Certified to CE/FCC/UL 60601 medical standards
- ★ 21.5" wide LCD panel 1920x1080 (FHD)
- ★ Wide viewing angle 178°/178°
- ★ Narrow-bezel true-flat PCAP touch screen
- ★ Anti-glare UV-resistant tempered glass (7H hardness)
- ★ 10-point multi-touch , supports Nextech stylus
- ★ Aluminum housing with multiple mounting options
- ★ Made in Taiwan, 3-year warranty
- ★ Power input options : 12VDC / 9–36VDC / 100–240VAC
- ★ Optional remote control via RS-232 or DDC/CI
- ★ Optional high brightness up to 1500nits for outdoor applications
- ★ Optional Ambient light sensor with automatic brightness adjustment
- ★ Optional Privacy filter or antimicrobial surface treatment



UL 60601



PSE



BSMI



CE 60601



FCC Part18



## Display Specifications

Model Name	NTMD215 <u>XXSDX-XXXXXX</u> -600*	Display Mode	Normally Black
Screen Diagonal	21.5 inch	Response Time	14 msec.
Active Area	476.064x267.786 mm	Backlight	White LED
Resolution	1920x1080 (FHD)	Viewing Angle (L/R, U/D)	178°/178° (CR≥10)
Contrast Ratio	1000:1	Backlight Lifetime	>30,000 Hours
Aspect Ratio	16:9	Operating Temp.	0~50°C
Colors	16.7M	Storage Temp.	-20~60°C
Pixel Pitch	0.24795x0.24795 mm		

\* X = A-Z, 0-9 (Varies by options)

## Brightness Options

Configuration	Brightness	Application	Ordering Information
Standard	500nits	General (Indoor)	NTMD215 <u>NXSDX-XXXXXX</u> -600
Optional	1000nits	Outdoor / Semi-outdoor	NTMD215 <u>AXSDX-XXXXX</u> F-600
Optional	1500nits	Outdoor	NTMD215 <u>FXSDX-XXXXX</u> F-600

## Touch Options

Configuration	Specification	Ordering Information
Standard	Projected Capacitive Touch	NTMD215 <u>XPSDX-XXXXXX</u> -600
Optional	No touch	NTMD215 <u>X0SDX-XXXX0</u> X-600

## PCAP Touch Specifications

Touch Points	10 points	Cover Lens Thickness	2.0±0.2mm
Transparency	≥87%	Cover Lens Hardness	7H
Accuracy	99.00%	IK Ratings	IK07

## Other Configuration Options

Power Input		
Configuration	Specification	Ordering Information
<b>Standard</b>	<b>12VDC locking jack (Φ2.1mm)</b>	<b>NTMD215XXSD<b>2</b>-XXXXXX-600</b>
Optional	9-36VDC, Phoenix terminal block	NTMD215XXSD <b>P</b> -XXXXXX-600
Optional	100-240VAC, C14 inlet	NTMD215XXSD <b>A</b> -XXXXXX-600



Lockable DC Power Jack



Phoenix Terminal Block



C14 AC Inlet

Surface Treatment		
Configuration	Specification	Ordering Information
<b>Standard</b>	<b>Anti-Glare, Anti-UV Coating</b>	<b>NTMD215XXSDX-<b>GG</b>XXXX-600</b>
Optional	Antibacterial (AB Film)	NTMD215XXSDX- <b>AB</b> XXXX-600
Optional	Privacy filter (AS Film)	NTMD215XXSDX- <b>SF</b> XXXX-600

Housing Color		
Configuration	Specification	Ordering Information
<b>Standard</b>	<b>White</b>	<b>NTMD215XXSDX-XX<b>W</b>XXX-600</b>
Optional	Black	NTMD215XXSDX-XX <b>B</b> XXX-600
Optional	Silver	NTMD215XXSDX-XX <b>S</b> XXX-600
Optional	Custom Color	NTMD215XXSDX-XX <b>X</b> XXX-600

\* X = A~Z, 0~9 (Varies by Color)

## Nextech MD Series 21.5" Medical Touch Display

**NTMD215 V600**

Housing Material		
Configuration	Specification	Ordering Information
Standard	Aluminum	NTMD215XXSDX-XXXAXX-600
Optional	Stainless Steel	NTMD215XXSDX-XXXLXX-600
Optional	SECC	NTMD215XXSDX-XXXSXX-600

Touch Interface		
Configuration	Specification	Ordering Information
Standard	USB	NTMD215XPSDX-XXXXUX-600
Optional	No touch	NTMD215X0SDX-XXXX0X-600

Cooling System		
Configuration	Specification	Ordering Information
Standard	Fanless	NTMD215XXSDX-XXXXX0-600
Optional	7-blade, 4000 RPM, 28.3dB	NTMD215XXSDX-XXXXXF-600

## Supported OS

Windows	Win7, Win8, Win10, Win11 ↑
Linux	Kernel 2.6.24 ↑
Android	3.0 ↑
Mac	10.5.x ↑ (Intel CPU)

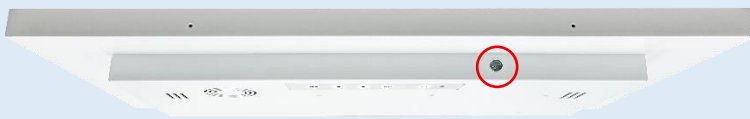
## Included Cables and Power Accessories

Item	Specification	Quantity
HDMI Cable	Male-to-male, 1.8 meter	1
AC-DC Adapter	12V medical adapter, CE/FCC/CCC/UL/RoHS/PSE/JET certified	1
Power Cord	* (varies by region)	1
USB Cable	Type A, Male-to-male, 1.8 Meter *(touch models only)	1

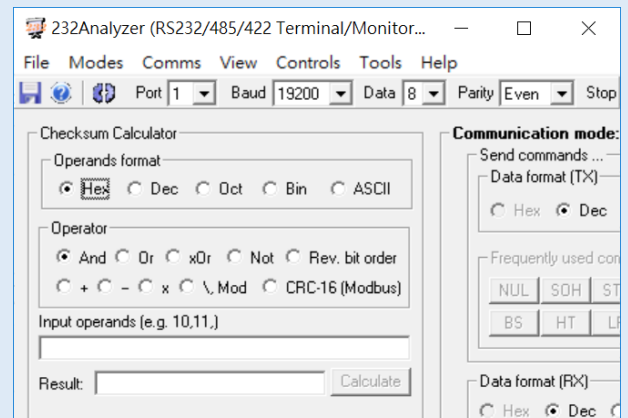
## Optional Features & Accessories

Option	Item	Description
Optional	Remote software control	Remote software control via RS232 interface
Optional	Ambient light sensor	Automatic brightness control
Optional	Stylus pen	

Light sensor (Optional)

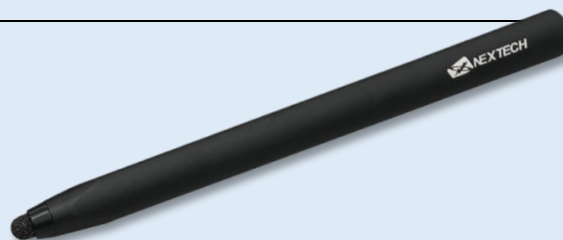


Remote Software (Optional)



Nextech Stylus (Optional)

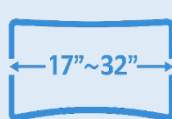
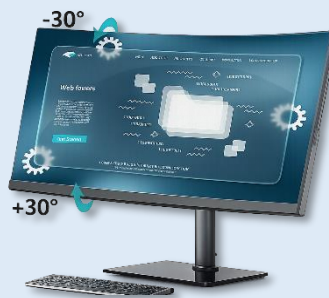
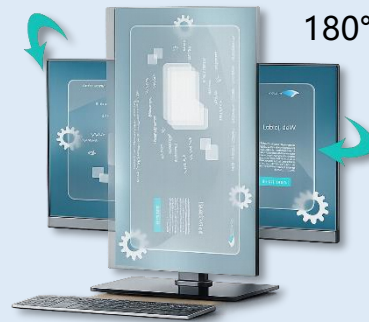
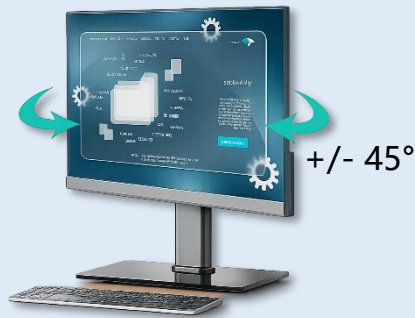
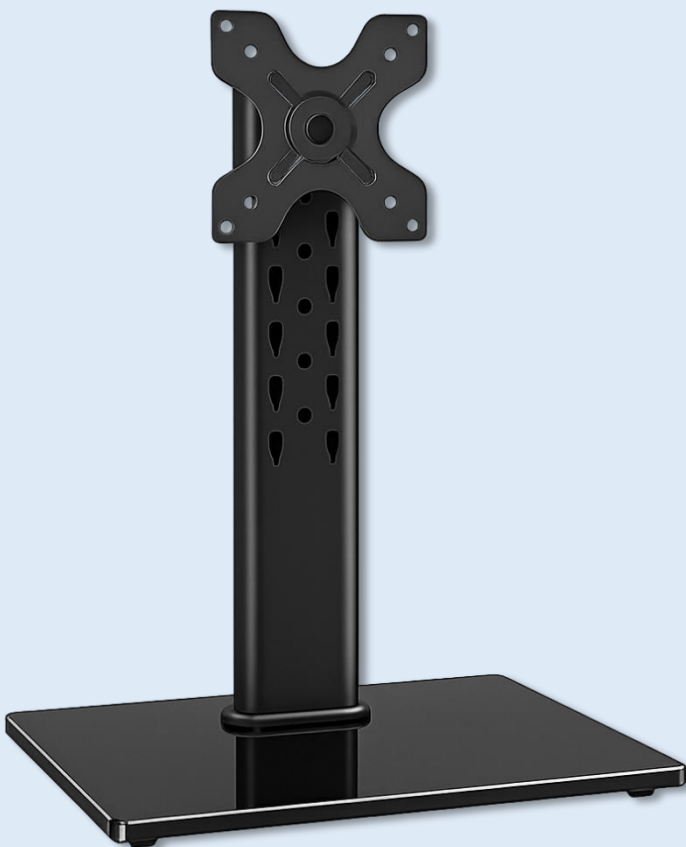
Tip	Passive conductive metal mesh
Tip Diameter	6mm



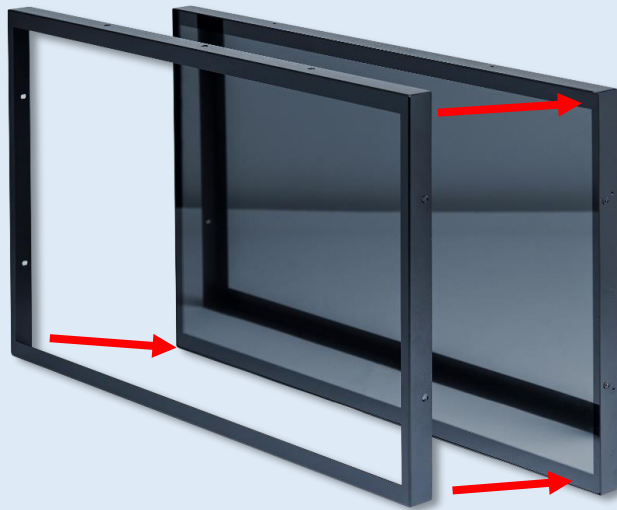
## Optional Mounting Accessories

	Accessories	Description
Optional	Desktop stand	For desktop use
Optional	Front protection frame	Protects panel and enables Front IP65 protection
Optional	Panel mount kit	For front mounting into kiosks, cabinets, or equipment panels.
Optional	Open-frame brackets	For rear mounting installation inside kiosks, cabinets, or equipment panels.
Optional	Wall Mount Bracket	For wall mounting

### Desktop Stand (Optional)



### Front Protection Frame (Optional)

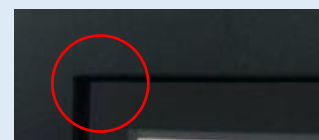
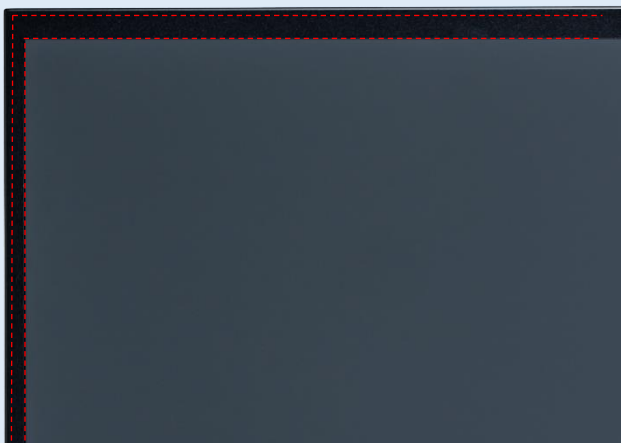


The standard **NTMD215** features a true-flat design with only 1mm metal bezel.

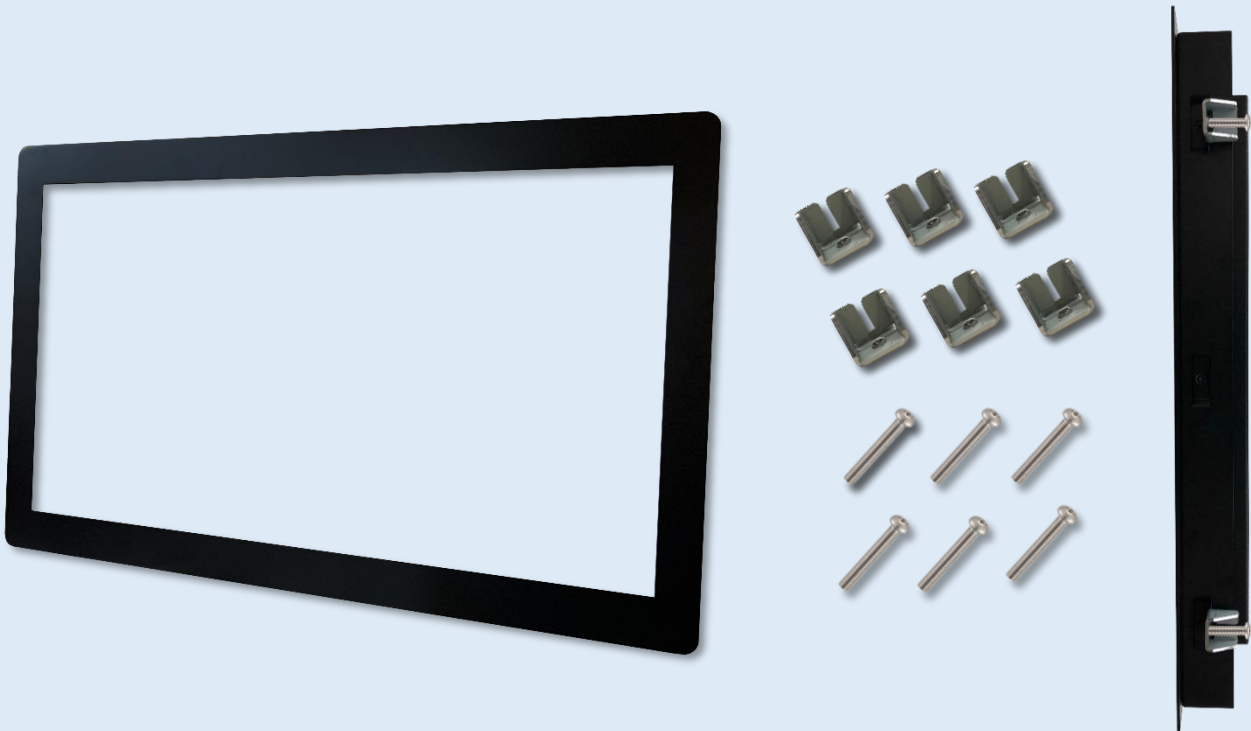
To enhance protection for the corners of the touch screen, the **Front Protection Frame** can be added.



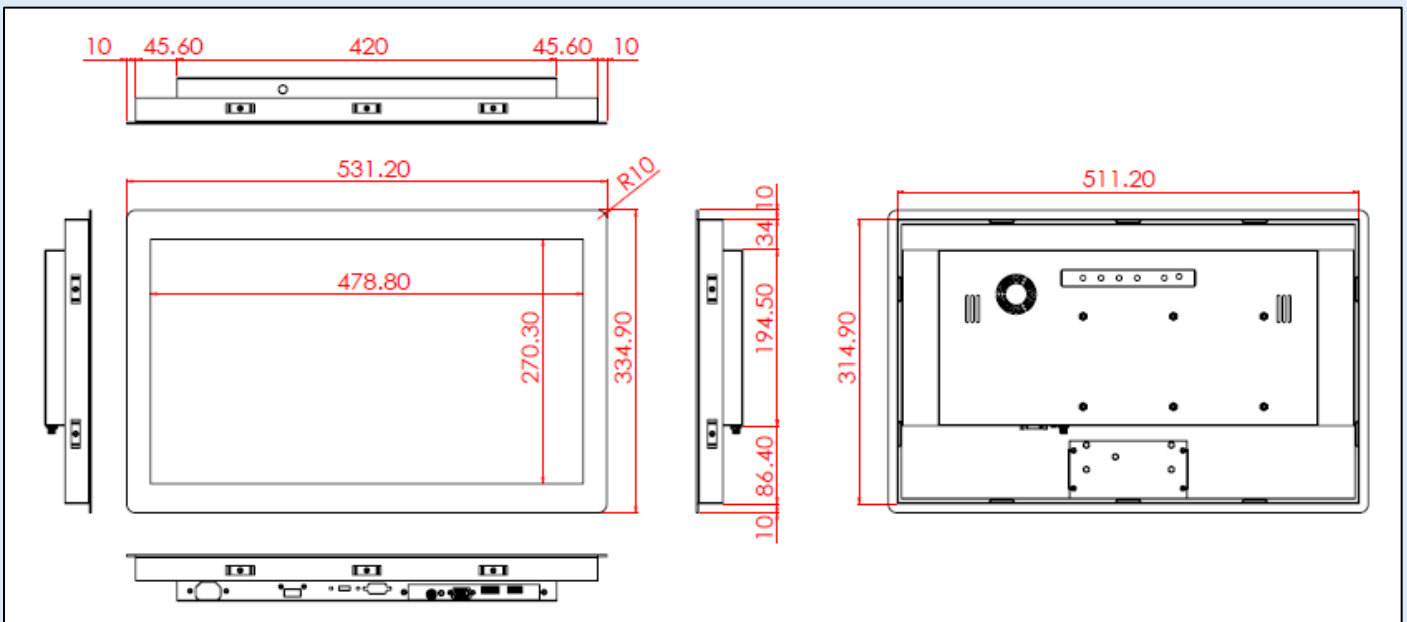
A waterproof gasket can be added between the **Front Protection Frame** and the **NTMD215** to comply with IP65 front protection requirements.



### Panel Mount Kits (Option)



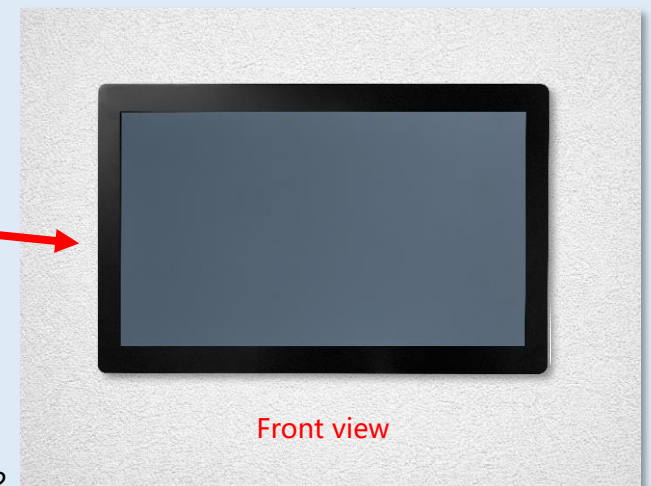
### Panel Mount Installation Dimensions





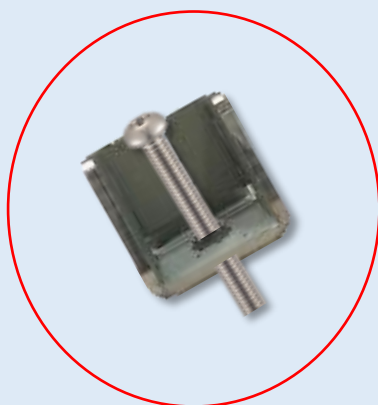
Step 1

Assemble the front module with the display unit.  
(This step is pre-assembled at Nextech's factory.)



Step 2

Insert the display into the cut-out from the front.



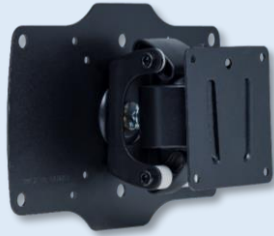
Step 3

Install the mounting clips from the rear side and secure them with screws.

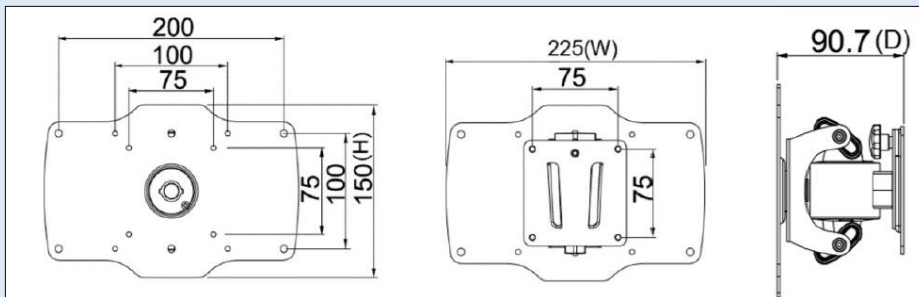




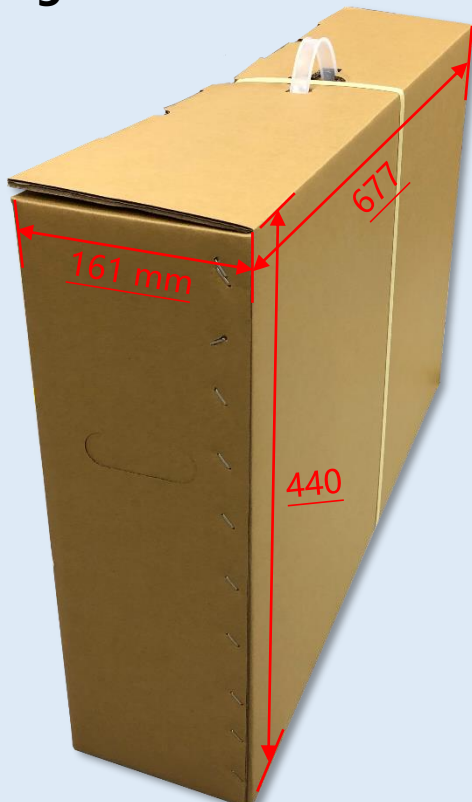
Wall Mount Bracket (Optional)



Wall Mount Bracket Dimensions

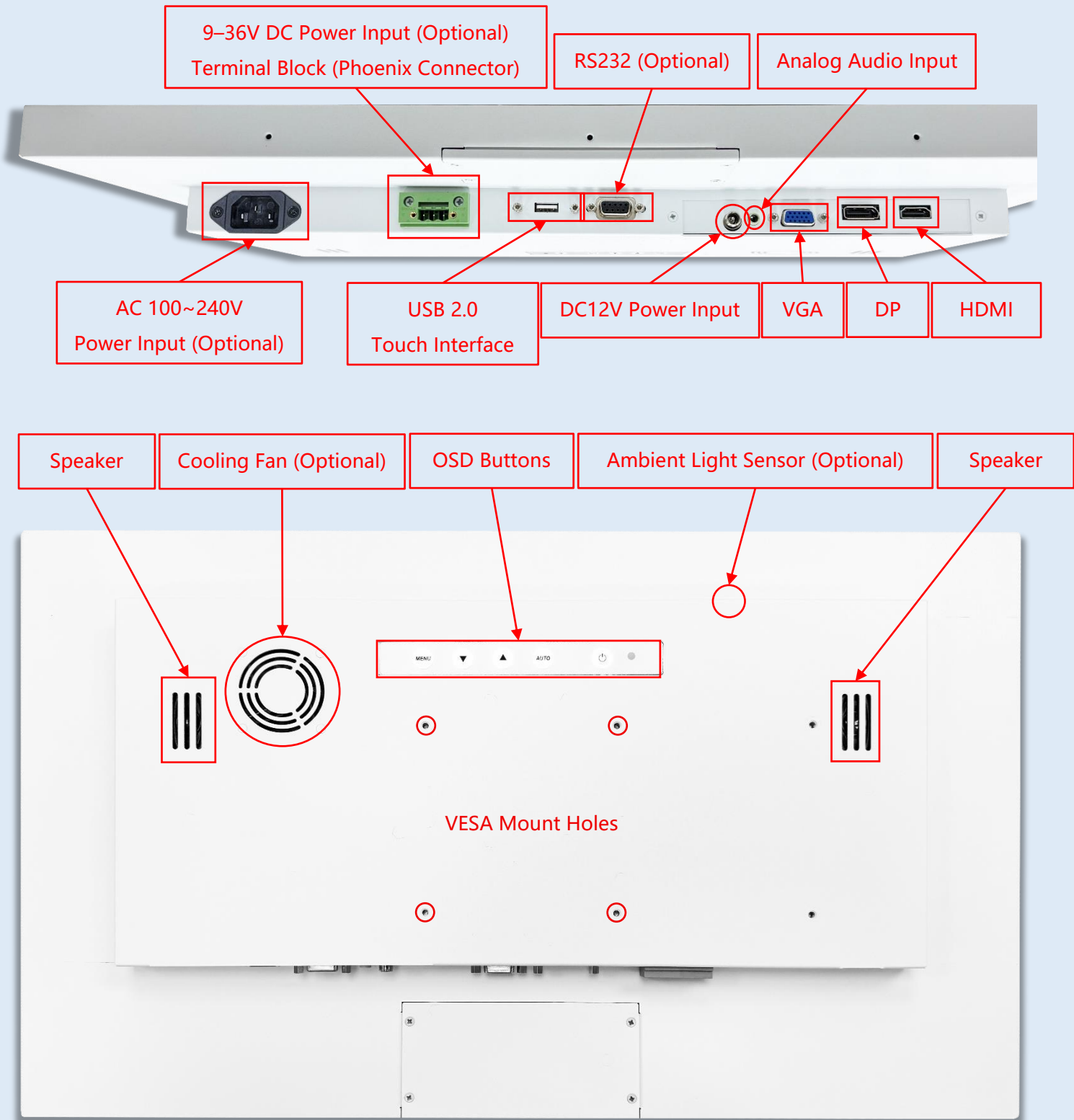


Packaging Information



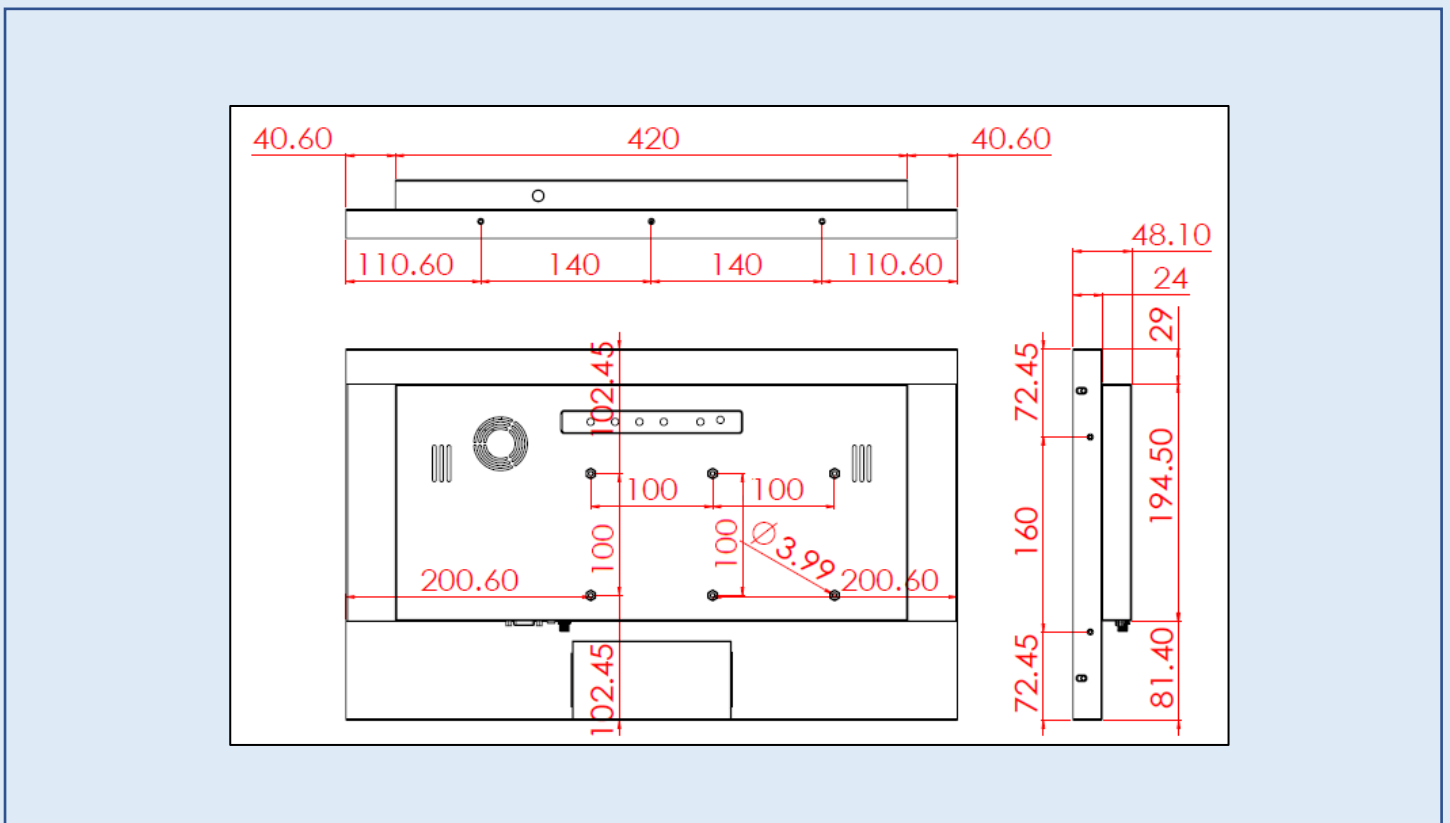
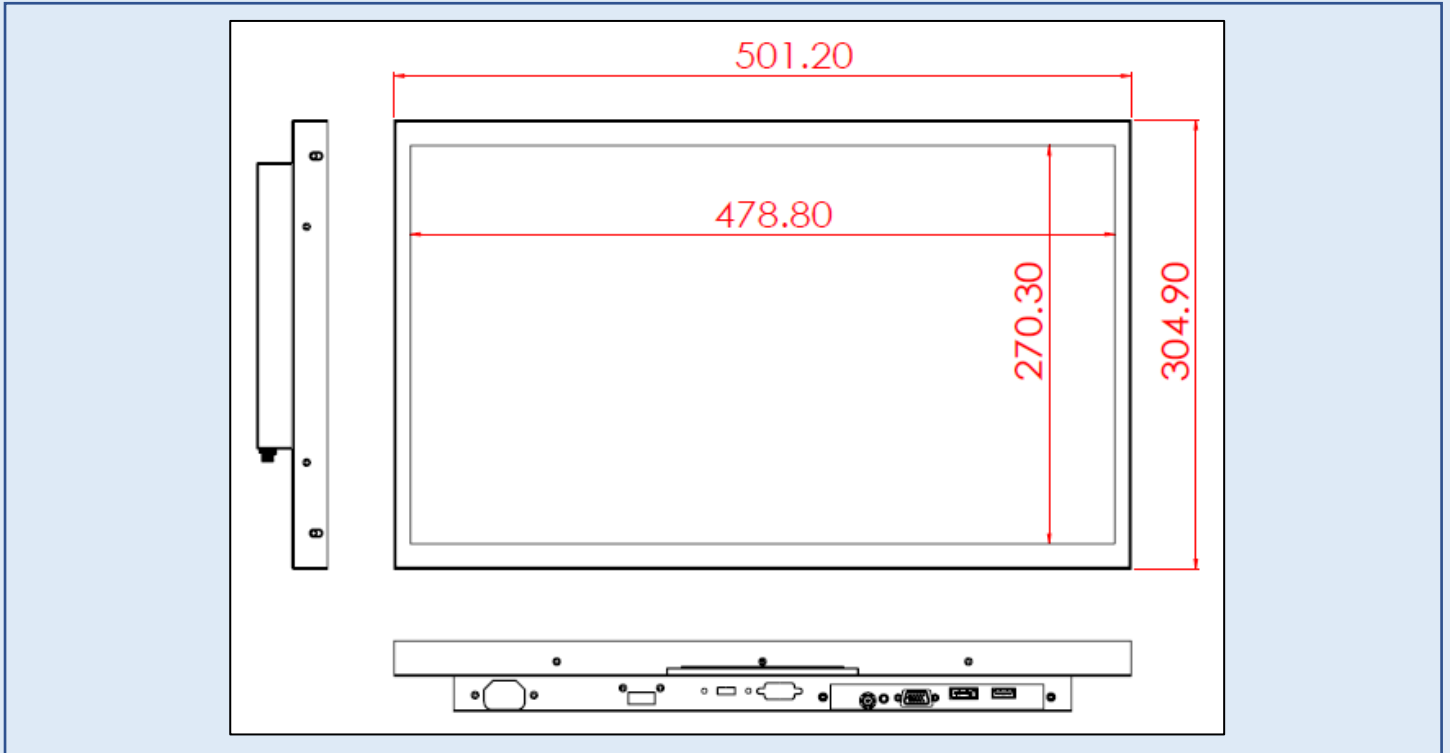
Carton Dimensions	<b>677x161x440 mm</b>
Net Weight	<b>≤4.1 kg</b>
Gross Weight	<b>≤5.6 kg</b>
Units per Pallet	<b>30 units</b>
Pallet Size	<b>120x100x147 cm</b>

## Input /Output System



## Mechanical Specifications

Dimensions (Max.)	<b>501.2x304.9x48.1(±2)mm</b>	Net Weight	<b>≤4.1 kg</b>
VESA Mount	<b>100x100 mm</b>	Gross Weight	<b>≤5.6 kg</b>



## Cosmetic Inspection Criteria

Display Area Defect Criteria			
Defect Description	Defect Criteria	Acceptance	Remarks
Dot Defects (dark dot, particles, bubbles, pits, dust, and foreign matter)	$D \leq 0.2\text{mm}$	Ignored	D=Diameter
	$0.2 < D \leq 0.7\text{mm}$	$N \leq 5$	N=Quantity
	$0.7 < D \leq 1\text{mm}$	$N \leq 3$	
	$D > 1\text{mm}$	$N \leq 0$	
Linear Defect (scratches, fluff, particles)	$W \leq 0.15\text{mm}$	Ignored	W=Width
	$0.15 < W \leq 0.5\text{mm}, L \leq 15\text{mm}$	$N \leq 2$	L=Length
	$W > 0.5\text{mm}$ or $L > 15\text{mm}$	NG	

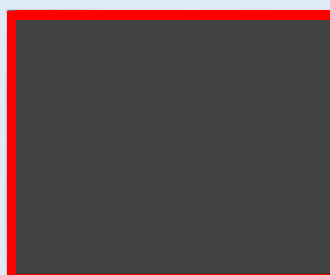
\* Visual inspection condition: 60 cm viewing distance, 90° viewing angle (front/side/back).

Front Appearance Defect Criteria (Including Coating)			
Defect Description	Defect Criteria	Acceptance	Remarks
Dot Defects (dark dot, particles, bubbles, pits, dust, and foreign matter)	$D \leq 0.7\text{mm}$	Ignored	D=Diameter
	$0.7 < D \leq 1.5\text{mm}$	$N \leq 3$	N=Quantity
	$D > 1.5\text{mm}$	$N \leq 0$	
Linear Defect (scratches, fluff, particles)	$W \leq 0.2\text{mm}, L \leq 15\text{mm}$	Ignored	W=Width, L=Length
	$0.2 < W \leq 0.7\text{mm}, L \leq 15\text{mm}$	$N \leq 1$	
	$W > 0.7\text{mm}$ or $L > 15\text{mm}$	NG	

Side / Back Appearance Defect Criteria (Including Coating)			
Defect Description	Defect Criteria	Acceptance	Remarks
Dot Defects (dark dot, particles, bubbles, pits, dust, and foreign matter)	$D \leq 1.5\text{mm}$	Ignored	D=Diameter
	$1.5 < D \leq 3\text{mm}$	$N \leq 8$	N=Quantity
	$D > 3\text{mm}$	$N \leq 2$	
Linear Defect (including scratches, fluff, particles)	$W \leq 0.8\text{mm}, L \leq 15\text{mm}$	Ignored	W=Width, L=Length
	$0.8 < W \leq 1.5\text{mm}, L \leq 15\text{mm}$	$N \leq 5$	
	$W > 1.5\text{mm}$ or $L > 15\text{mm}$	NG	



Display Area  
(Red Area)



Front Appearance (Red Area)



Back Appearance